



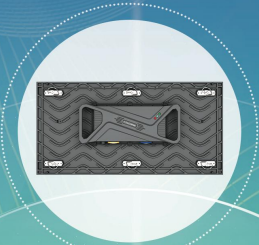
MOLNIYA

1ft x 2ft Outdoor LED Panel

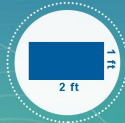
P6 | P9



2-in-1 Power/Data Interface



Integrated LED Tile



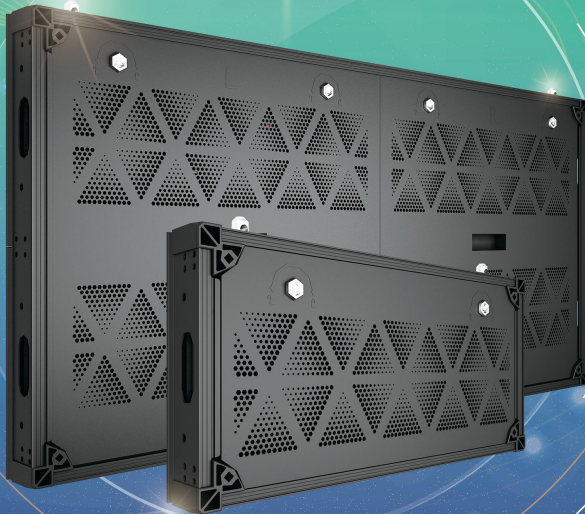
Tile Size in feet



Simple & portable package



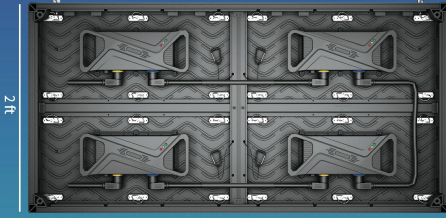
100% Front & Rear Service



Molniya Series



2 ft



4 ft

- Panel size 4ft*2ft and 2ft*1ft
- Molniya panel with 50lbs while Molniya mini 14lbs
- 100% both front & rear service
- Integrated Die-casting control box, 15s for maintenance by loosening thumb screws(6pcs)
- With testing button and indicator light
- Support stock on-sale, all elements designed by modular
- All frame with CNC for excellent flatness control
- Every tile with safety rope to avoid dropping incautiously

• Tile size: 1ft by 2ft wide

• Brightness: 8500nits

• 3840Hz

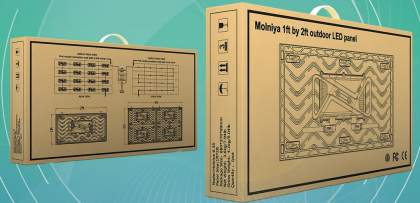
• IP65

Product parameters

Model No.	Molniya 6	Molniya 9
Pixel Pitch	6.35mm	9.5mm
LED Type	SMD2727	SMD2727
Pixel Density	24800 pixel/m ²	11022 pixel/m ²
Brightness	8000-8500nits	8000-8500nits
Color Temperature	6500-9500k	6500-9500k
Scan	1/6	1/2
Panel Dimension	48"X24"X3.15"	48"X24"X3.15"
Panel Resolution	192*96 pixel	128*64 pixel
Panel Weight	21.8KG/48lb	
Max Power Consumption	≤750W/m ²	
AVG Power Consumption	≤375W/m ²	
Viewing Angle	H≥160° V≥115°	
Refresh Rate	3840Hz	
Gray Scale	14-16bit	
IP Rating	IP65	
Cabinet Material	Aluminum	
Lifetime	50000hrs	
Operating Temp/Humidity	-20°C~+40°C; 10%~90%RH	
Storage Temp/Humidity	-40°C~+60°C; 10%~60%RH	

*This parameter table is for reference only. The details can be consulted by scanning code.

- Simple & portable package design, embedded with jumper cable



- 2-in-1 Power/data cables



Add: North Hall 1203D65, Cangsong Bldg, Tairan 6th Road, Futian District, Shenzhen 518040

Tel: (+86)755-28991020

Email: sales@neovision.tech