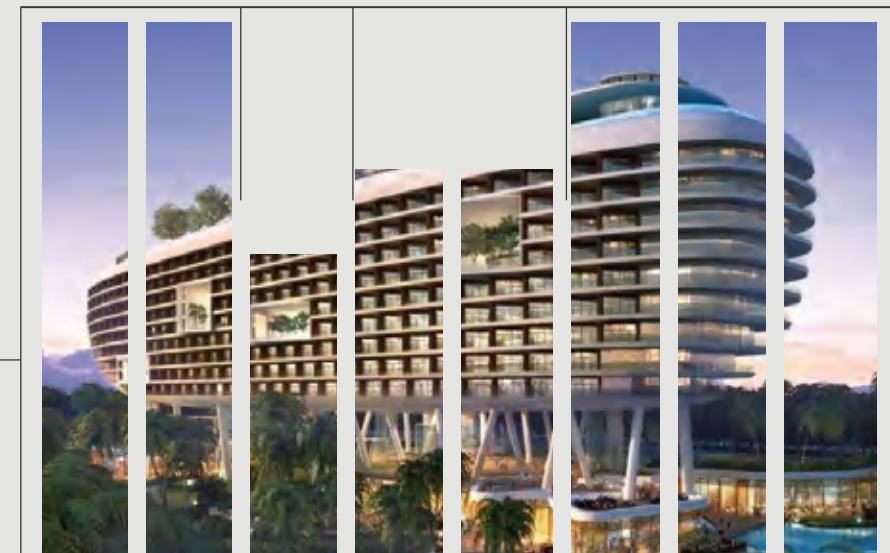




微信视频号



匠 / 心 / 专 / 注 / 好 / 生 / 活

Ingenuity for better living standard

KINGTEC PRODUCTS CATALOGUES

YICHUN KINGTEC BUILDING MATERIALS INDUSTRIAL CO.,LTD.

Add: Central Avenue, Pharmaceutical Industrial Park, Yuanzhou District, Jiangxi Province 336000

KINGTEC INTERNATIONAL (KINGTEC FIREPROOF BUILDING SYSTEMS CO., LTD.)

Add: RM.1205, building 2, No.277 Lunglan Road, Xuhui District, Shanghai, China 200030

Hotline: +86-18101707889 (WeChat)

Email: sales@kingtecbuildingsystem.cn

<http://www.kingtecbuildingsystem.cn>

<http://kingtecboard.alibaba.com>

绿色建筑材料实力生产厂家
Building Materials Powerful Manufacturer

CONTENTS

About Us	01
Products	03
History	04
National Standard & Atlas of Architecture (Kingtec Participation in Compiling)	05
Passive Fire Protection Systems	
Hawkpan (Top Calcium Silicate Board)	09
Hawk-S (Top Calcium Silicate Board)	19
Howk-X Pressure Relief Board	25
Steel Compositd Anti-explosion Silicate Boar	29
Outdoor Application	
GadisDecking (Fiber Cement Decking)	41
Gadis Siding (Fiber Cement Siding)	63
Gadis Cladding (Fiber Cement Cladding)	67
Decorative Fiber Cement Board	71
Indoor Application	
KingTecPan (Low, Medium & High Density)	99
Kingtec Cili Board	103
Kingtec DP Ceiling Board	107
Kingtec Tina Acoustic Panel	109
Fiber Cement Slab-King for Floor Systems	111
Typical Projects	113



Established in 1989, Kingtec is the leading manufacturer for the designing and producing of reinforced-fiber cement board and calcium silicate board in China.

Our factory for exporting is in Yichun city, Jiangxi Province, it is near to the world china city Jingdezhen city of Jiangxi Province. We prefer to establish our production lines in Yichun, just because from the china city, we could get the best raw materials to produce calcium silicate board and fiber cement board. We have an annual output of 20 million square meters of calcium silicate board and fiber cement board.

We Kingtec is the director unit of calcium silicate board branch of China Association of concrete and cement products industry, and the main participant unit of China calcium silicate board and fiber cement board industry standard. Our company is in the leading position in the field of passive fire protection and external wall decorative system, especially in the building firewall system, ventilation and smoke exhaust duct system, tunnel fire protection system, fiber cement cladding board wall system, fiber cement siding board wall system.

We were awarded GB/T9001-2016 / ISO 9001:2015 Quality Management System Certificate, GB/T28001-2011/OHSAS18001:2007 Occupational Health and Safety Management System Certificate, GB/T 24001-2006 Environmental Management System Certificate, China High and New Technology Product Certificate, Hong Kong Passive Fire Protection Certificate and China Environmental Labeling Certificate. The company's credit is AAA class contract abiding and trustworthy enterprise. It is the recommended green energy saving product in China.

Kingtec products are widely used in many landmark projects, such as Russia subway, Vietnam Museum, Office building of the Ministry of foreign affairs of Malabo, Africa, Yili Dairy China and oversea factories, Royal Square Novena of Singapore, Suntec City Mall of Singapore, Hong Kong Zhuhai Macao Bridge, Xiamen BRICs conference venue, Shanghai National Expo Hall, Qingdao Olympic Sailing Center G20 venue, Beijing Daxing International Airport, the Great Hall of the people, National Stadium, National Stadium (Bird's Nest), National Swimming Center (Water Cube), National Grand Theater, Beijing subway, Shanghai Subway, Shanghai World Expo Center, Shanghai Hongqiao Airport, Shanghai Disneyland, Shanghai subway, Jiuquan Satellite Launch Center, Guangzhou Baiyun Airport, Guangzhou international financial center... These projects have been widely praised by customers.

Kingtec will adhere to the basic principle of "win-win cooperation" and be oriented by customer demand, and devote to the application and development of calcium silicate board, fiber cement board and its extension field. Through the systematic management, integration, optimization and active participation and control of key links in the industry chain in this field, it will realize the sustainable development of Kingtec.

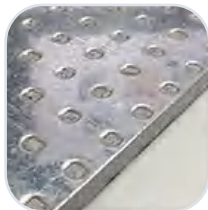


PRODUCTS

Passive Fire Protection Systems \ Blast Resistant \ Explosion Proof & Pressure Relief Systems



Hawkpan
Passive Fire Protection Systems



Hawk-B
Blast Resistant Wall / Duct / Ceiling Systems

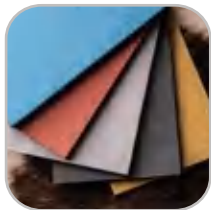


Hawk-X
Explosion Proof & Pressure Relief Systems

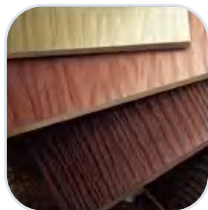


Hawk-S
Tunnel Fireproof Systems

Outdoor Application



Gadis Fiber Cement Cladding
Uniform Color Decorative Board



Gadis Fiber Cement Siding
External Wall / Roof Decorative Board



Gadis Fiber Cement Facing Board
Primer-painted Decorative Fiber Cement Board



Gadis Fiber Cement Decking Board
Scenic Spot Decking Board

Indoor Application



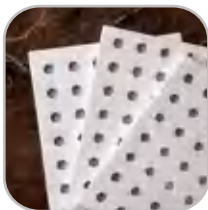
Kingtec KT Board
Fiber Cement Board



Kingtec Cili Board
Stone / Ceramic Tile Sticking Systems



Kingtec DP Ceiling Board
T-type Steel Channel Suspended Ceiling Systems



Acoustic Board
Sound-absorb Partition Systems



Slab-King Fiber Cement Board Floor
LOFT Floor / Normal Floor Systems

Company Locations



匠心专注好生活!

Ingenuity for better living standard !

National Standard & Atlas of Architecture
(Kingtec Participation in compiling)

<div><p>纤维增强硅酸钙板 第1部分:无石棉硅酸钙板</p></div> <div>○ Fiber Reinforced Calcium Silicate Board, Standard Code JC/T 564.1-2018</div>	<div><p>非金属及复合风管</p></div> <div>○ Non-metallic and Conforming Smoke and Air Duct, Standard Code JG/T 258-2009</div>	<div><p>通风管道耐火试验方法</p></div> <div>○ Fire Resistance Test Method for Ventilation Pipeline, Standard Code GB/T 17428-2009</div>	<div><p>抗爆、泄爆门窗及屋盖、墙体建筑构造</p></div> <div>○ Participating in the compilation of Atlas of "Anti-explosion pressure-relief door and window and roof wall building structure"</div>	<div><p>防火建筑构造 (一)</p></div> <div>○ Fireproof Architectural Structure, Standard Code 07J905-1</div>	<div><p>建筑防排烟系统设计和设备附件选用与安装</p></div> <div>○ Design of smoke control and exhaust system for buildings and selection and installation of equipment accessories, Standard Code K103-1</div>
<div><p>外墙用非承重纤维增强水泥板</p></div> <div>○ Non-load-bearing FiberReinforced Cement Slab for Exterior Wall, Standard Code JG/T 369-2012</div>	<div><p>外墙内保温复合板系统</p></div> <div>○ Composite Board System for External Wall and Internal Insulation, Standard Code GB/T 30593-2014</div>	<div><p>外墙内保温工程技术规程</p></div> <div>○ Technical Specification for Internal Insulation of External Wall, Standard Code JG/T 261-2011</div>	<div><p>人防工程设计大样图 建筑专业(JZ)</p></div> <div>○ Architecture Specialty of People's Air Defense Design (JZ), Standard Code RFJ05-2009</div>	<div><p>人防工程设计大样图 通风空调专业(TFKT)</p></div> <div>○ Civil Air Defense Design Ventilation and Air Conditioning Specialty(TFKT), Standard Code RFJ05-2009</div>	<div><p>11BS6 通风与空调工程</p></div> <div>○ Jointly Compile Atlas of "Ventilation and Air Conditioning Engineering"</div>

Awarded



Passive Fire Protection Systems

Hawkpan Passive Fire Protection Systems

Hawkpan Tunnel Fire Protection Systems

Hawk-X Explosion Relief Panel

Steel Composited Anti-explosion Silicate Board





Hawkpan

Based on the international leading technical formula, Kingtec factory adopts KTN360 process to add a variety of fire prevention components and corresponding minerals to research, develop, then produced a high grade professional fire proof calcium silicate board according to the requirements of passive fire protection systems.

Technical Data

	Hawkpan 975	Hawkpan 870
Standard Size mm	2440 X 1220 X (9~12)	2440 X 1220 X (9~30)
Density kg/m³	975	770≤ D ≤870
Water Content Rate %	≤10	≤10
Water Expansion Rate %	≤0.20	≤0.25
Thermal Conductivity W/(m.k)	≤0.20	≤0.16
Frost Resistance	25 freeze–thaw cycles, no cracking, no delamination, no falling off	
Water Impermeability	24hrs test, no water–drop	
Non–combustibility	Comply with GB8624–2006 Grade A1	
Water Resistance	After 30 days of test, no crack, no delamination, no shedding, no swelling, no discoloration	
Acid Resistance	After 15 days of test, no crack, no delamination, no shedding, no swelling, no discoloration	
Alkali Resistance	After 15 days of test, no crack, no delamination, no shedding, no swelling, no discoloration	

Environmental Protection Performance

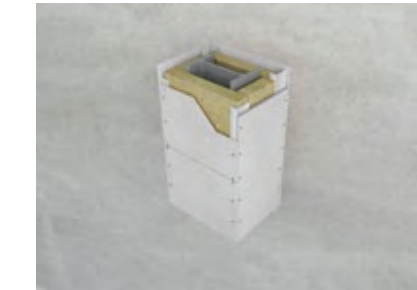
Smoke toxicity	Comply with GB/T20285–2006, AQ Security Level
Asbestos Content	Comply with HJ/T223–2005 Standard, asbestos free
Radioactivity	Internal Exposure Index IRa≤0.20; External Exposure Index Ir≤0.25 Grade A decoration materials, unlimited production, marketing and application range

Mechanical Property

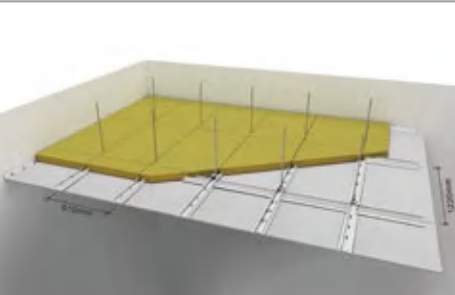
Bending Strength (Dry) Mpa	≥5.5
Impact Resistance KJ/m²	≥1.0

The above data is just for a reference, for more info, you could contact our technical department.
If you want to book other size boards, you are welcome contact our marketing center. +86–18101707889 (WeChat)

Fire Wall System



Ceiling Fire Proof System



Ventilation and Smoke Extraction Ducts

Steel Beam Fire Protection
Steel Column Fire Protection

Curtain Wall Fireproof Skirt & Sealing



M&E Services Enclosures



Fire-resisting Rolling Shutter

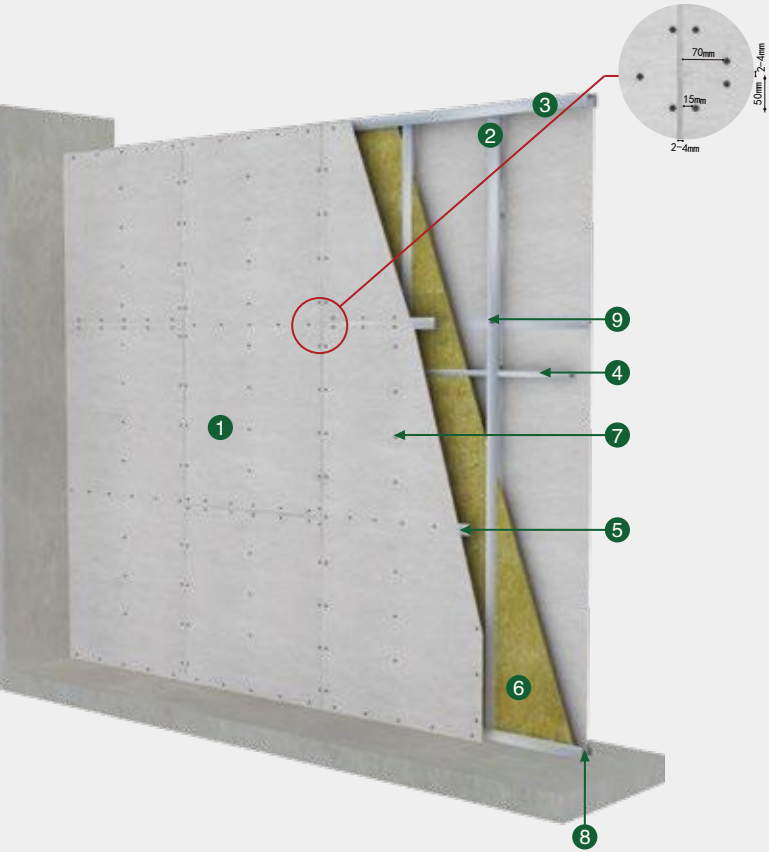


Cavity & Smoke Barriers



Pipe Well Enclosures

防火墙系统



Hawkpan fire wall systems was built by light-gauge steel channel, rock wool, and grade A1 noncombustible high-level calcium silicate board: Hawkpan. Fire resistance limit is 1hrs~4hrs. It provides the most safe, economic and practical solution to realize the vertical fire compartment in the building.

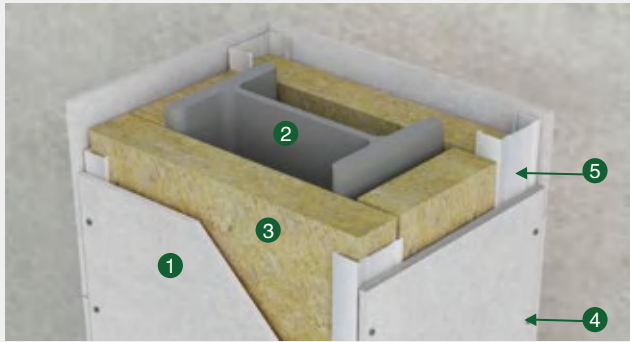
3hrs Fire Resistance Systems

- ① Hawkpan 9mm
- ② Vertical Steel Channel C75x50x0.6mm
- ③ Heaven & Earth Steel Channel C75x40x0.6mm
- ④ Through Steel Channel 38x12x1.0mm
- ⑤ Galvanized Steel Sheet 60x0.7mm
- ⑥ Rock Wool: 75mm thickness, Bulk Density 100kg/m3
- ⑦ Self-tapping screw: M3.5, interval 250mm
- ⑧ Expansion Bolt: Φ6x80mm, interval 400mm
- ⑨ Core Rivet

4hrs Fire Resistance Systems

- ① Hawkpan 12mm
- ② Vertical Steel Channel C100x50x0.6mm
- ③ Heaven & Earth Steel Channel C100x40x0.6mm
- ④ Through Steel Channel 38x12x1.0mm
- ⑤ Galvanized Steel Sheet 60x0.7mm
- ⑥ Rock Wool: 100mm thickness, Bulk Density 100kg/m3
- ⑦ Self-tapping screw: M3.5, interval 250mm
- ⑧ Expansion Bolt: Φ6x80mm, interval 400mm
- ⑨ Core Rivet

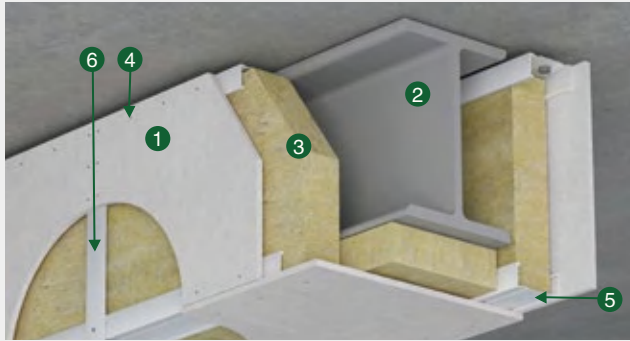
Steel Beam / Steel Column Fireproof Enclosure Systems



Use Self-tapping screws fixing Hawkpan on the steel structure. Hawkpan has low heat conductivity, good heat insulation capability, and durable; together with the heat insulation function of rock wool, it had effectively slow down the temperature rising of the steel structure, and increased the fire resistance capability of the steel structure. It is safe, economical, environment friendly fire protection way.

4hrs Steel Beam Fire Resistance System

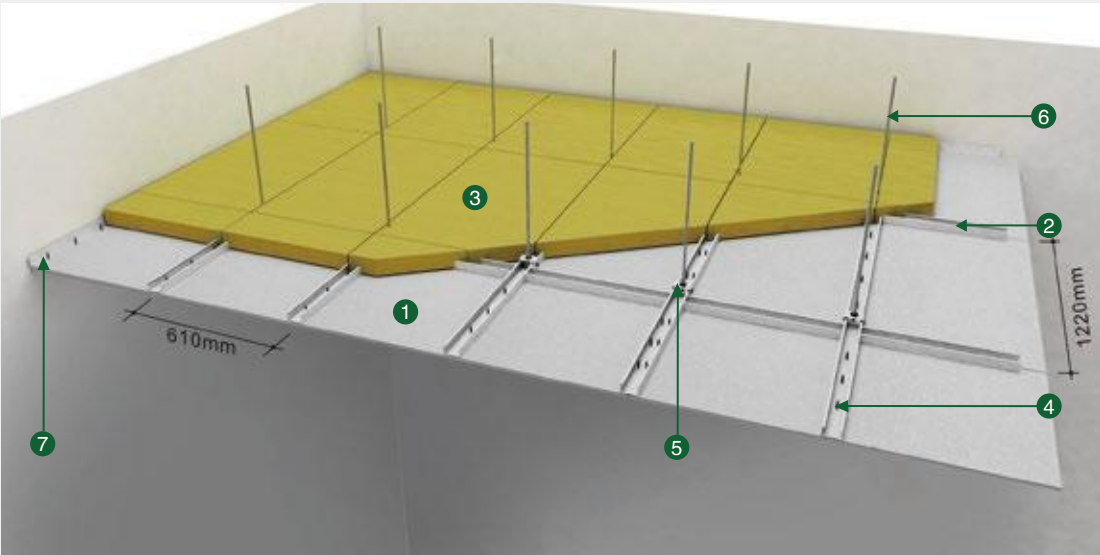
- ① Hawkpan 12mm
- ② Steel Beam
- ③ Rock Wool: 100mm thickness, Bulk Density 100kg/m3
- ④ Self-tapping screw: M3.5, interval 250mm
- ⑤ Light-gauge steel channel: 100x50x0.6mm



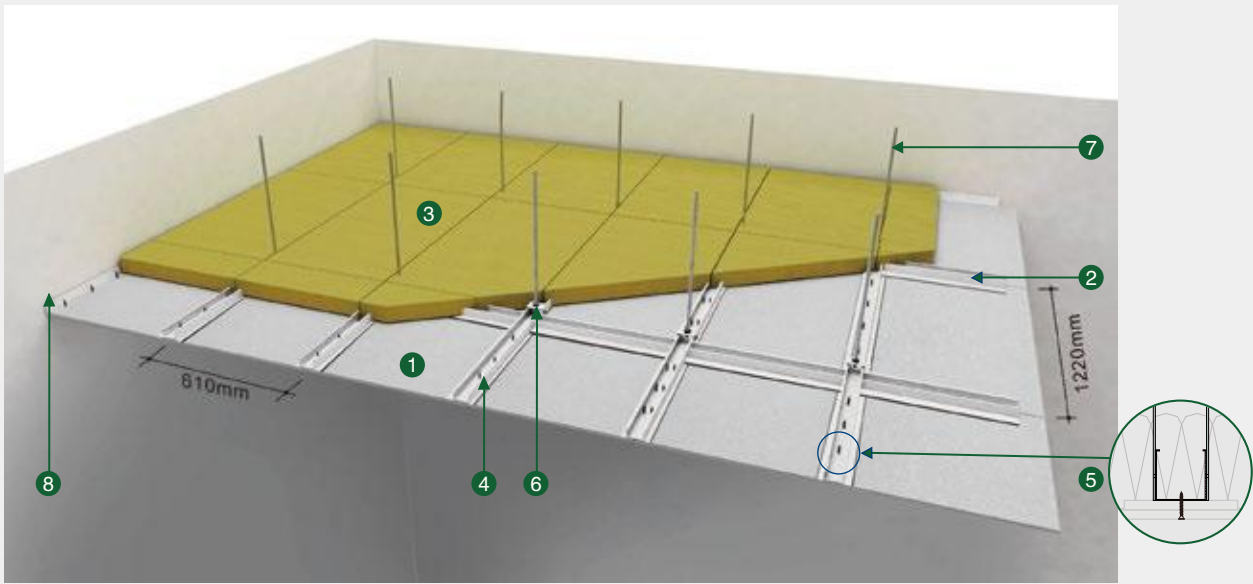
4hrs Steel Column Fire Resistance System

- ① Hawkpan 12mm
- ② Steel Beam
- ③ Rock Wool: 100mm thickness, Bulk Density 100kg/m3
- ④ Self-tapping screw: M3.5, interval 250mm
- ⑤ Light-gauge steel channel: U100x40x0.6mm
- ⑥ Light-gauge steel channel: C100x50x0.6mm

Fire Ceiling System



1hrs Fire Ceiling System



2hrs Fire Ceiling System Structure

Hawkpan Fire Ceiling System was built by light-gauge steel channel, rock wool, grade A1 noncombustible non-organic fire board Hawkpan. It could meet 1~2hrs fire resistant requirement of ceiling systems. It had offered the most safety, economical and practicable measure for the horizontal fire protection space.

1hrs Fire Resistance Ceiling System

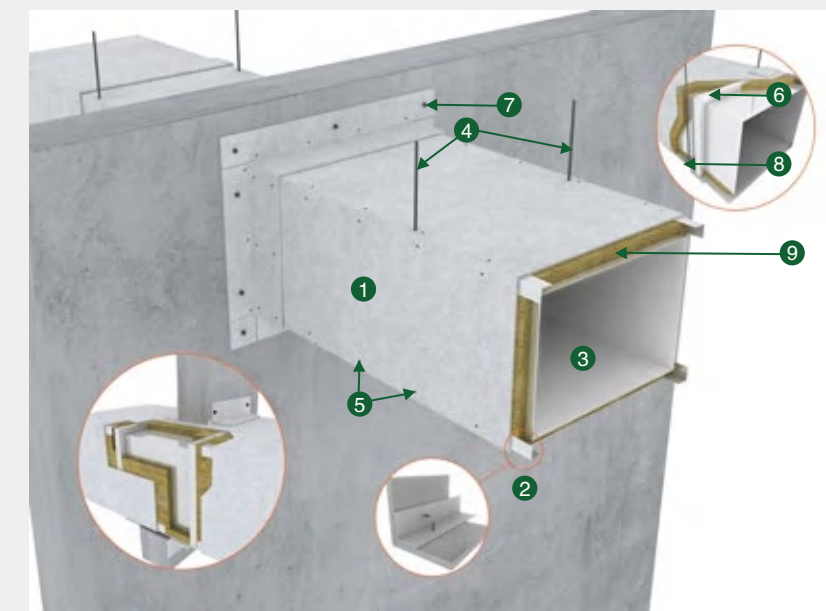
- ① Hawkpan 9mm
- ② Light-gauge steel channel: C50x50x0.6mm
- ③ Rock Wool: 100mm thickness, Bulk Density 100kg/m3
- ④ Self-tapping screw: M3.5, interval 250mm
- ⑤ U Shape Supporting Card
- ⑥ Hanging Bar
- ⑦ Side Steel Channel

2hrs Fire Resistance Ceiling System

- ① Hawkpan 12mm
- ② Light-gauge steel channel: C50x50x0.6mm
- ③ Rock Wool: 100mm thickness, Bulk Density 100kg/m3
- ④ Self-tapping screw: M3.5, interval 250mm
- ⑤ 9x100mm Hawkpan Strip
- ⑥ U shape Supporting Card
- ⑦ Hanging Bar
- ⑧ Side Steel Channel

Hawkpan Passive Fire Protection System

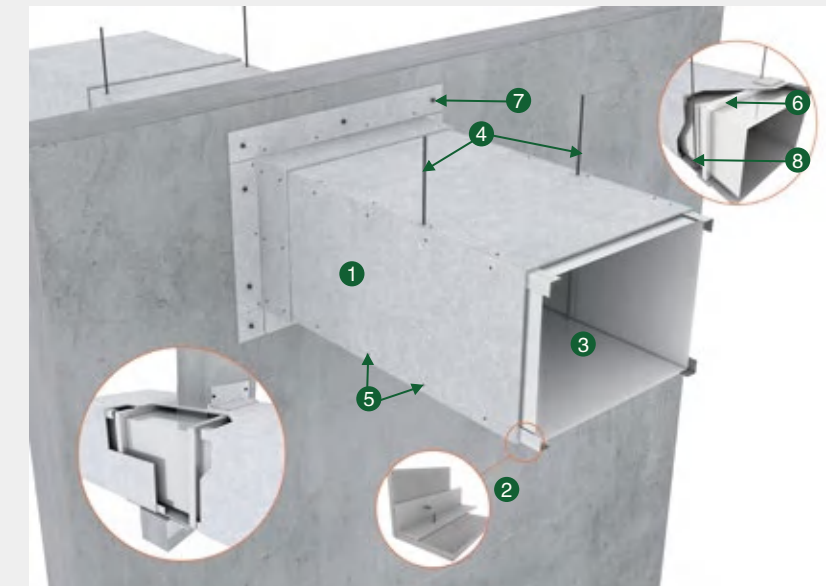
Ventilation and Smoke Extraction Ducts



As the most important part of ventilation and smoke extraction ducts system, Hawkpan fire enclosure system for the ducts could meet 1~3hrs fire resistance requirement. It is mainly applied in the life-saving system of smoke exhaust and positive pressure air supply in case of fire.

1hrs / 3hrs Ventilation & Smoke Extraction Ducts Fire System

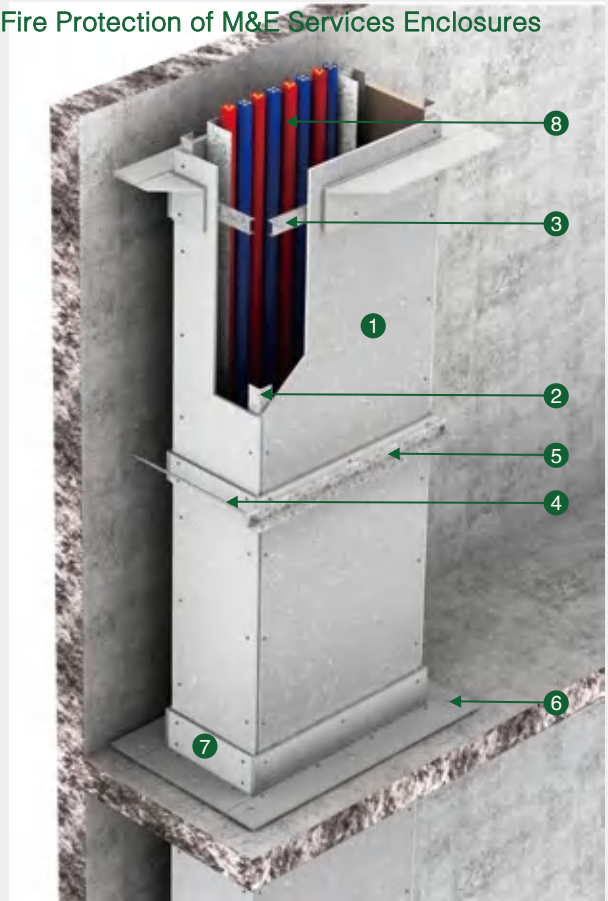
- ① Hawkpan: 9mm / 12mm
- ② Steel Channel: L35x35x0.6mm
- ③ Steel Duct
- ④ Hanging Bar
- ⑤ Self-tapping Screw: M3.5, interval 250mm
- ⑥ Light-gauge steel channel: U50x40x0.6mm
- ⑦ Expansion bolt
- ⑧ Cross arm
- ⑨ Rock wool: 50mm thickness, bulk density 100kg/m3



2hrs / 3hrs Ventilation & Smoke Extraction Ducts Fire System

- ① Hawkpan: 9mm / 12mm
- ② Steel Channel: L35x35x0.6mm
- ③ Steel Duct
- ④ Hanging Bar
- ⑤ Self-tapping Screw: M3.5, interval 250mm
- ⑥ Light-gauge steel channel: U50x40x0.6mm
- ⑦ Expansion bolt
- ⑧ Cross arm

Fire Protection of M&E Services Enclosures

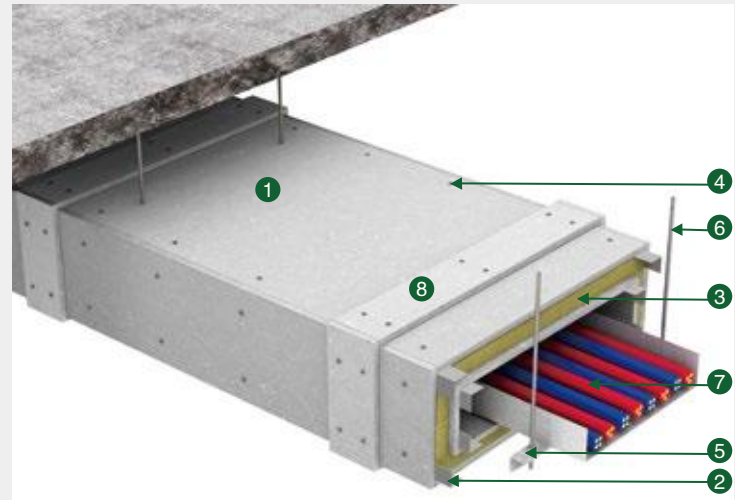


Vertical M&E services systems, such as electrical cable, pipe well, exhaust air duct, garbage pipe, and so on, must be set independently; the shaft lining should be noncombustible materials with at least no less than 1.0hrs fire resistance capability.

1.5hrs Fire Systems

- ① Hawkpan: 12mm
- ② Steel Channel: L40x40x0.6mm
- ③ Light-gauge steel channel: U50x40x0.6mm
- ④ Hanging Bar
- ⑤ Cross arm
- ⑥ Expansion bolt
- ⑦ 12x100mm Hawkpan Strip
- ⑧ Electrical Cable

Electrical Cable Enclosure



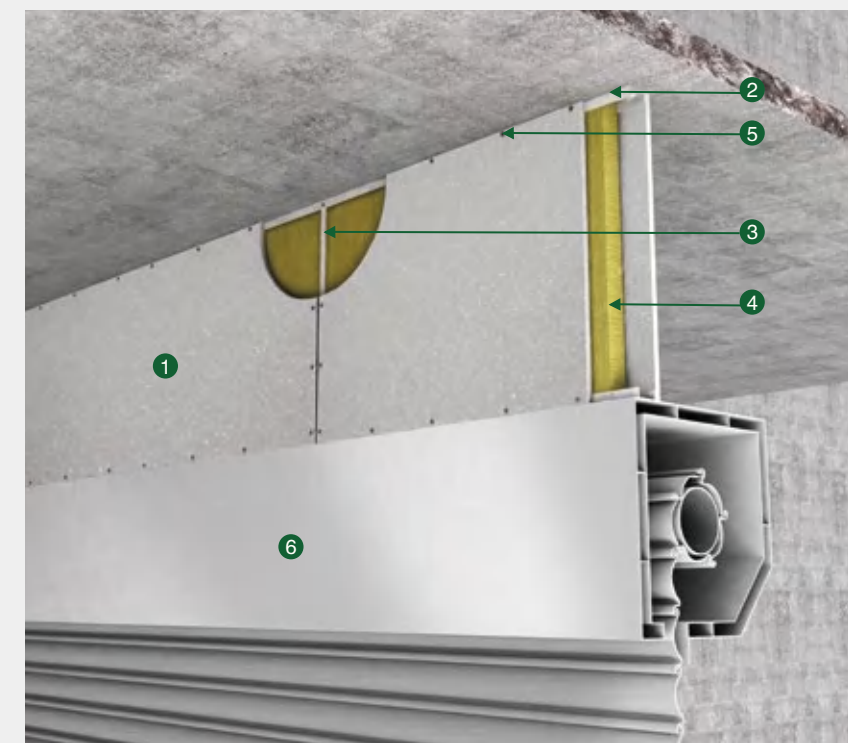
The distribution line of fire-fighting electrical equipment shall meet the needs of continuous power supply or continuous power supply in case of fire, and its laying shall meet the following requirements: in case of concealed laying, it shall be laid in the incombustible structure through a tube well and the protection thickness shall not be less than 30mm. In case of open laying (including laying in the ceiling), metal pipes or closed metal trunking shall be used, and fire protection measures shall be taken.

1.5hrs Electrical Cable Enclosure System

- ① Hawkpan: 12mm
- ② Steel Channel: L40x40x0.6mm
- ③ Rock Wool: 50mm thickness, bulk density 100kg/m3
- ④ Self-tapping Screw: M3.5, interval 250mm
- ⑤ Cross arm
- ⑥ Hanging bar
- ⑦ Electrical Cable
- ⑧ 12x100mm Hawkpan Strip

Hawkpan Passive Fire Protection Systems

Fire Protection of Cavity & Smoke Barriers



When fire shutter is used in the fire compartment, the fire resistance limit shall not be less than 3 hours, and the top of the shutter shall also meet the corresponding fire protection requirements. Hawkpan firewall system is widely used in blocking the upper part of the fire shutter.

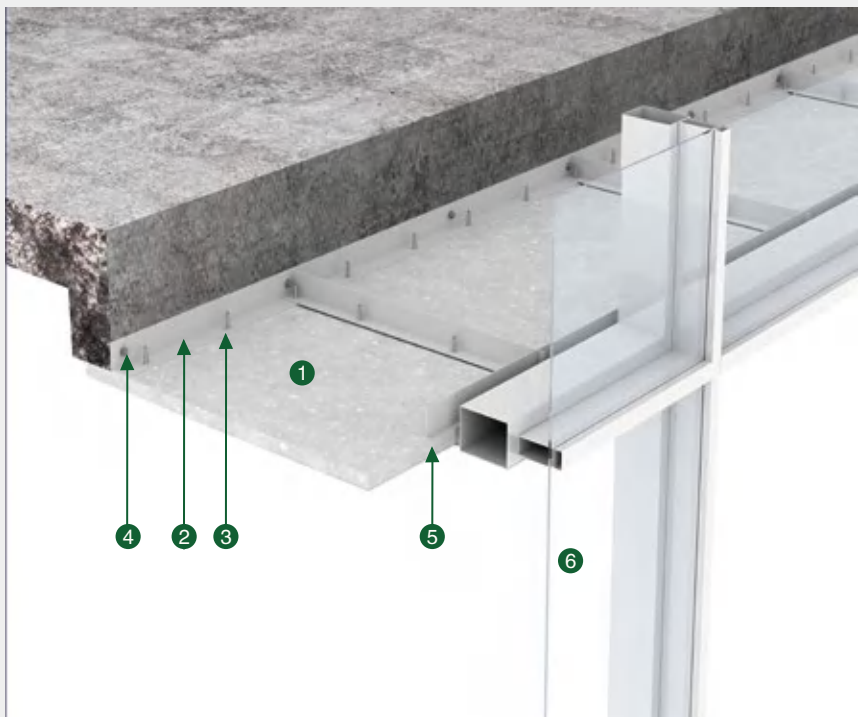
3hrs Fire Systems

- ① Hawkpan: 9mm
- ② Light-gauge Steel Channel: U75x40x0.6mm
- ③ Light-gauge SteelChannel:C75x50x0.6mm
- ④ Rock Wool: 75mm thickness, bulk density 100kg/m3
- ⑤ Self-tapping Screws: M3.5, interval 250mm
- ⑥ Fire Protection of Cavity & Smoke Barriers

4hrs Fire Systems

- ① Hawkpan: 12mm
- ② Light-gauge Steel Channel: U100x40x0.6mm
- ③ Light-gauge SteelChannel:C100x50x0.6mm
- ④ Rock Wool: 100mm thickness, bulk density 100kg/m3
- ⑤ Self-tapping Screws: M3.5, interval 250mm
- ⑥ Fire Protection of Cavity & Smoke Barriers

Curtain Wall Fire Skirt Wall

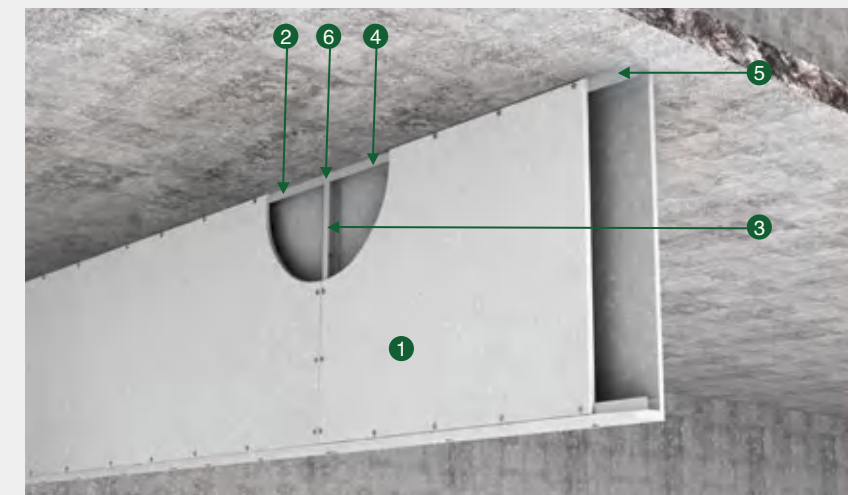


Fire prevention for floors of curtain wall parts of buildings.

3hrs Fire Curtain Wall System

- ① Hawkpan: 9mm
- ② Light-gauge Steel Channel: L40x40x0.6mm
- ③ Self-tapping Screws: M3.5, interval 250mm
- ④ Expansion Bolt
- ⑤ Fireproof Adhesive
- ⑥ Glass Curtain Wall

Hawkpan Smoke Barriers

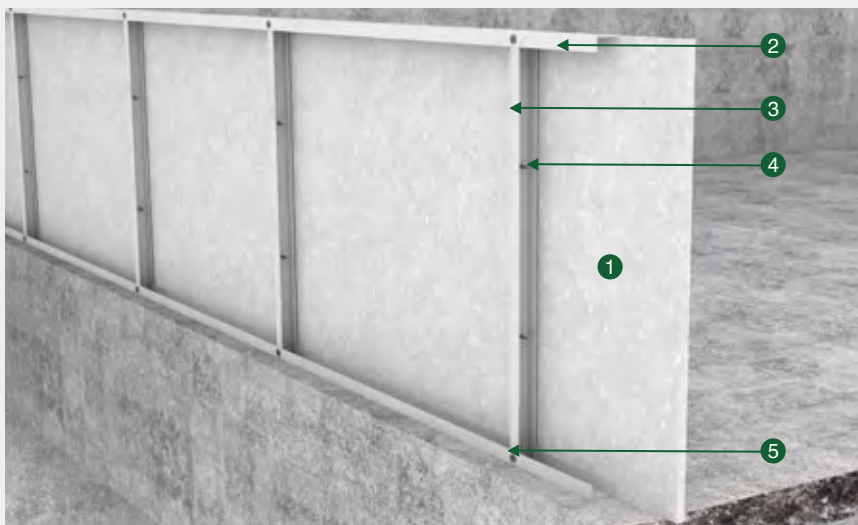


The places where mechanical smoke exhaust facilities are required and the indoor clear height is not less than 6m shall be divided into smoke prevention zones. The building area of each smoke prevention zone shall not exceed 500m2, and the smoke prevention zone shall not cross the fire prevention zone. The partition wall, structural beam protruding no less than 500mm under the ceiling and incombustible body protruding no less than 500mm under the ceiling or ceiling should be used for the partition of smoke prevention zone.

Grade A1 Smoke Barriers' Structure

- ① Hawkpan: 9mm
- ② Light-gauge Steel Channel: U75x40x0.6mm
- ③ Light-gauge SteelChannel:C75x50x0.6mm;
- ④ Self-tapping Screws: M3.5, interval 250mm
- ⑤ Expansion Bolt: Φ6x80mm, interval 400mm
- ⑥ Core Rivet

Curtain Wall Fire Skirt Wall



For the curtain wall without window and sill wall, a non-combustible solid skirt wall with a fire resistance limit of not less than 1.0hrs and a height of not less than 0.8m shall be set at the outer edge of each floor slab; the gap between the curtain wall and each floor slab and partition wall shall be sealed with fire-proof sealing materials. The fire protection system is widely used in curtain wall fire skirt wall and plugging.

3hrs Fire Systems

- ① Hawkpan: 9mm
- ② Light-gauge Steel Channel: U75x40x0.6mm
- ③ Light-gauge Steel Channel:C75x50x0.6mm
- ④ Self-tapping Screws: M3.5, interval 250mm
- ⑤ Core Rivet



Technical Data	
Standard Size mm	1220 x 2440 / 3000
Density kg/m³	975
Edge Straightness %	≤0.3
Bending Strength (Dry) MPa	≥6
Bending Strength in Saturated Sate Mpa	≥4.2
Hygroscopic Deformation Rate %	≤0.20
Anti-halogenation	After 20hours’ test, no water-drop, no moisture regain
Smoke toxicity	Comply with GB/T20285-2006, ZA1 Security Level
Non-combustibility	Comply with GB8624-2006 Grade A1
Water Resistance	After 30 days of test, no crack, no delamination, no shedding, noswelling, no discoloration
Acid Resistance	After 15 days of test, no crack, no delamination, no shedding, no swelling, no discoloration
Alkali Resistance	After 15 days of test, no crack, no delamination, no shedding, no swelling, no discoloration
Humidy Resistance	After 30 days of test, no crack, no delamination, no shedding, no swelling, no discoloration
Frost Resistance	100 freeze-thaw cycles, no cracking, no delamination, no falling off.
The above data is just for a reference, for more info, you could contact our technical department. If you want to book other size boards, you are welcome contact our marketing center. +86-18101707889 (WeChat)	

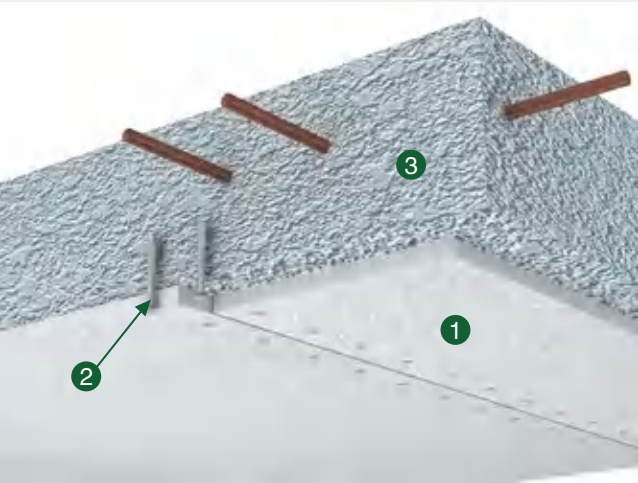
Hawkpan for Tunnel Fire Protection

It is composed of a variety of siliceous and calcareous inorganic substances and log pulp fibers, refined by advanced German equipment. It is an upgrade and extension series product based on calcium silicate board, a super-grade product with ultra-low density and super fire resistance. It is suitable for special spaces with very high fire protection requirements, such as tunnels, nuclear power plants, etc.

In case of tunnel fire, the temperature can reach over 1200℃ in a short period of time. The concrete lining of the tunnel is hard to bear such high temperature, which makes the concrete burst, resulting in the loss of people and property. In shield tunnel, immersed tube tunnel, etc., through the experiments of CH / RABT and other fire curves, the fire resistance limit of Hawkpan tunnel fire system can reach more than 2 hours.



Feature of Tunnel Fire Protection System



Structure of Hawkpan Tunnel Fire Protection System

Single Layer Slab Board(24mm/27mm/30mm/36mm)

1. Slab 24mm/27mm/30mm/36mm Hawkpan Tunnel Fire Board

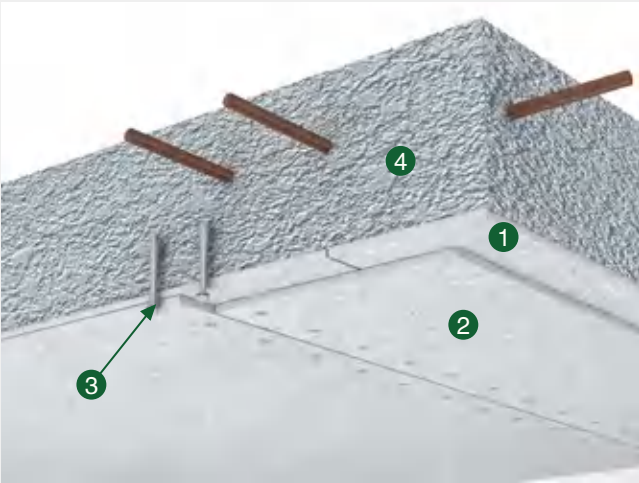
2. Implosion expansion bolt

Double Layers Thin Board (10mm+10mm, 8mm+12mm, 15mm+15mm)

1.First layer 10mm Hawkpan Tunnel Fire Board

2.Second Layer 10mm Hawkpan Tunnel Fire Board

3.Implosion expansion bolt



Tunnel Fire Board Installation

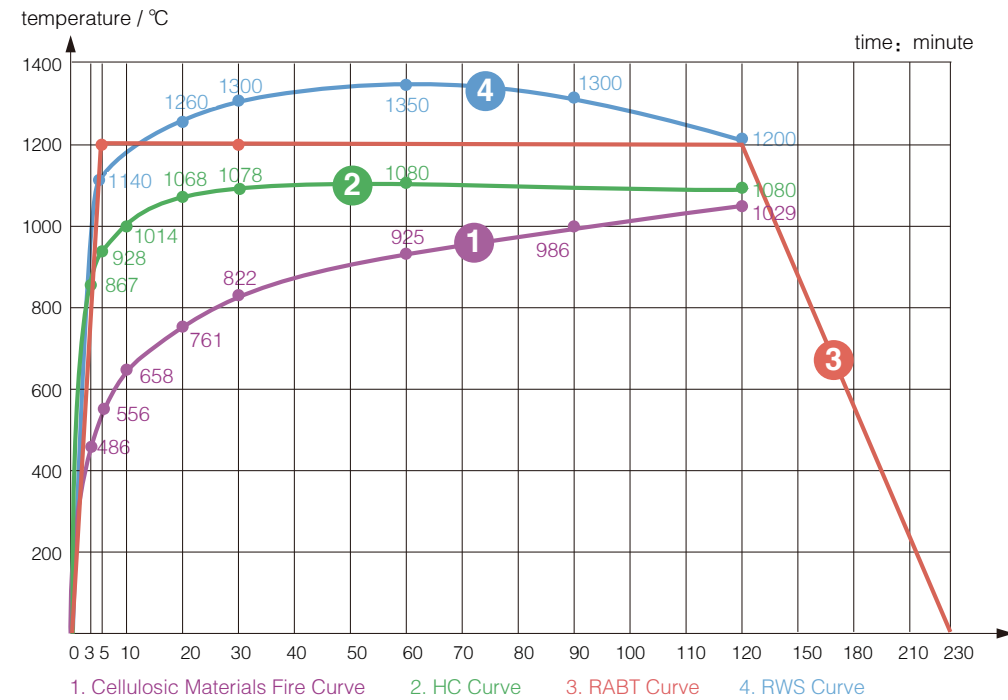
1. Snap the line on the surface of Hawkpan Tunnel Fire Board, determine the position of the bolt hole, and use twist drill to drill(through hole).

2. Put Hawkpan Tunnel Fire Board on the top of the tunnel, counter with support, and drill holes with impact drill at the position where there are holes on the board surface.

3. Knock the implosion bolt sleeve into the pre drilling hole, and the fastening bolt is sunk into the top of Hawkpan tunnel fire board.



Tunnel Fire Temperature Rising Curve



- ① The temperature rise curve of the fire caused by the flashover of the buildings, which are mainly made of fiber combustible materials, building products and decoration materials.
- ② HC Curve: The temperature rise curve of subway, tunnel, etc. which is caused by high wind speed, heat, forced ventilation, oil and gas volatilization in the air and causes rapid temperature rise.
- ③ RABT Curve: The temperature rise curve of a fire in a totally closed tunnel along the line, which rises sharply in a short period of time at the beginning of the fire, and then drops to the ambient temperature after a period.
- ④ RWS Curve: Jointly developed by the Dutch Ministry of transport and its partner, the Belgian Ministry of public affairs. It assumes that in the worst case of fire, the latent heat value is 300MW fuel oil or the tank car burns continuously for 120 minutes.

China National Tunnel Fireproof Requirement

Application	Grade I	Grade II	Grade III	Grade IV
	Length of Tunnel Closure Section (m)			
Could pass dangerous chemicals vehicles	L > 1500	500 < L ≤ 1500	L ≤ 500	—
Only for passing non-dangerous chemical vehicles	L > 3000	1500 < L ≤ 3000	500 < L ≤ 1500	L ≤ 500
Pedestrian or non-motor vehicles only	—	—	L > 1500	L ≤ 1500



The Importance of Tunnel Fire Protection

When a fire occurs in a tunnel, due to the complexity of the tunnel building structure and the relatively closed space environment, it is difficult for the heat to diffuse to the surrounding area, which makes the temperature rise rapidly, the air volume expands rapidly, and the space pressure increases rapidly. In view of this, in general, when a fire occurs, the temperature in the tunnel can quickly reach about 1000–1200 °C, and the tunnel structure is difficult to withstand such a high temperature. Concrete, when heated to 270 degrees, it starts to burst, then collapses and emits a lot of smoke.



- Factors to be Considered When Selecting Fireproof Materials**
- 1.Type of the concrete
 - 2.Traffic volume of the tunnel
 - 3.Maximum refractory temperature of the lining material
 - 4.The density and humidity of concrete
 - 5.The added mixture when stirring concrete
 - 6.What kind of fire that need to resist?



The Feature of Tunnel Fire Protection System



1、 The physical and chemical properties of Hawkpan Tunnel Fire Board are not affected by the vehicle's fuel exhaust and water seepage. In fact, in a very humid tunnel, Hawkpan Tunnel Fire Board acts as a conduit to ensure that the water flows into the drainage system, rather than drips on the road.

2、 In case of fire, the protective layer of the Hawkpan Tunnel Fire Board has the function of filtering, blocking the gas such as the chlorine released from the burning rubber and plastic to pass through, and this kind of gas has a strong corrosive effect, so it can not directly contact with the concrete and reinforced steel bar of the tunnel structure.



3、 The use of Kingtec tunnel fire-proof board can ensure that the surface of the protection board in the wet tunnel will not produce condensation water, and a small amount of moisture is absorbed by the board, and then emitted to the surrounding air. No matter in any form, the use of Kingtec tunnel fire-proof board as the protective layer, the absorption and emission of water will not have any impact on the performance of the board.

4、 Generally the Hawkpan Tunnel Fire Protection System does not need maintenance. If a part of concrete structure needs to be inspected, just undid the screws, and remove the Hawkpan tunnel fire board easily. After the inspection, the Hawkpan tunnel fire board shall be reinstalled.



Hawk-X Pressure Relief Board

Hawk-X Pressure Relief Board is made of calcium material, siliceous material and plant fiber. It was made by molding, high temperature and autoclave curing, then formed stable tobermorite crystal structure. Kingtec Hawk-X pressure relief system releases blast pressure rapidly without secondary injury.

Technical Data

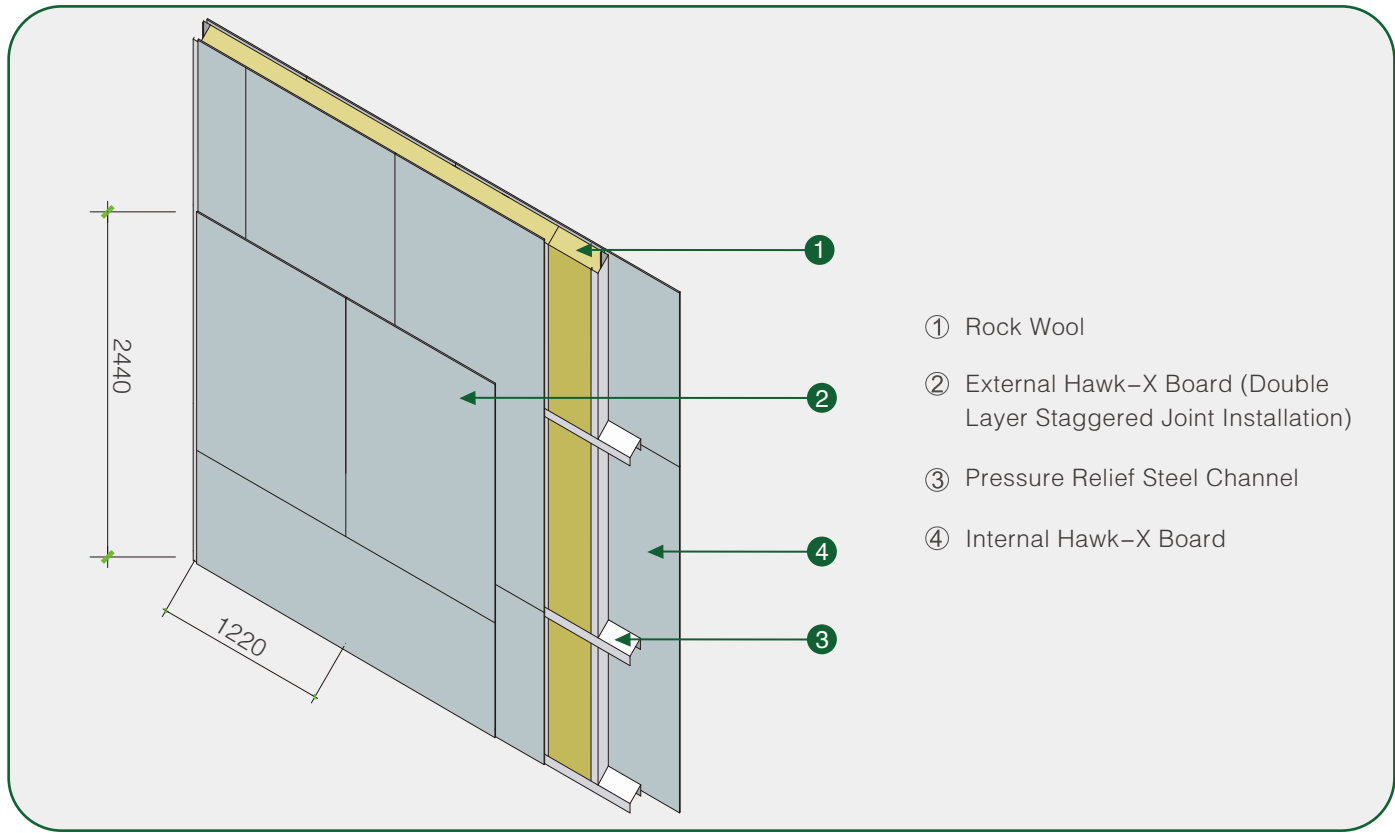
Standard Size mm	2440 X 1220 X 9
Density g/cm³	1.10 ± 0.1
Water Content Rate %	≤10
Water Expansion Rate %	≤0.20
Thermal Conductivity W/(m.k)	≤ 0.20
Bending Strength (Dry) Mpa	≥8
Bending Strength in Saturated Sate Mpa	≥5.6
Impact Resistance kj/m	≥ 1.0
Smoke toxicity	Comply with GB/T20285–2006, AQ Security Level
Mould Resistance	Comply with HG/T3950–2007, Grade 0
Asbestos Content	Comply with HJ/T223–2005 Standard, asbestos free
Radioactivity	Internal Exposure Index IRa≤0.20; External Exposure Index Ir≤0.25 Grade A decoration materials, unlimited production, marketing and application range
Frost Resistance	100 freeze–thaw cycles, no cracking, no delamination, no falling off
Water Impermeability	24hrs test, no water–drop
Non–combustibility	Comply with GB8624–2006 Grade A1
Hot Water Performance	Flexural Strength Ratio
Soaking Drying Performance	After 25 cycles, the ratio of flexural strength ≥65%
Water Resistance	After 30 days of test, no crack, no delamination, no shedding, no swelling, no discoloration
Acid Resistance	After 15 days of test, no crack, no delamination, no shedding, no swelling, no discoloration
Alkali Resistance	After 15 days of test, no crack, no delamination, no shedding, no swelling, no discoloration

The above data is just for a reference, for more info, you could contact our technical department.
If you want to book other size boards, you are welcome contact our marketing center. +86–18101707889 (WeChat)

Explosion Venting Principle

The pressure relief component is set in the reasonable part of the building, so that when the indoor explosion occurs, the pressure relief component can instantly release the critical pressure, guide the orderly release of the explosive force, reduce the impact on other parts in the explosion process, and at the same time, by controlling the quality and properties of the explosive fragments, it can effectively reduce the occurrence of personal injury and property loss caused by the explosive shock and the explosive fragments Probability.

Hawk-X Pressure Relief External Wall System



Hawk-X Pressure Relief Exterior Wall System

一、Rapid dispersion

Hawk-X Pressure Relief Board is light brittle material.

二、No secondary injuries

Hawk-X Pressure Relief Board is massive and powder, without sharp edges and corners, light in weight and low in density. The thermal insulation layer is light material, which is not easy to form secondary injury during pressure relief.

三、Wind pressure resistance, high strength

In the design of the project, the wind pressure requirements of the local external wall and the height of the wall will be fully considered to strengthen the layout of the structure, keel and hawk-x pressure relief plate, so as to ensure the stability of the wall and realize the pressure relief function.

四、Light weight, seismic intensity

The total weight of paint for hawk-x pressure relief plate external wall and external facing shall not exceed 60kg / m2, which meets the requirements of the code and is very beneficial to the load and seismic resistance of the whole building.

五、Durable and Weather Resistance

The exterior wall of hawk-x pressure relief plate is autoclaved at high temperature and has good weather resistance. Under normal use conditions, it can meet the use requirements of 50 years.

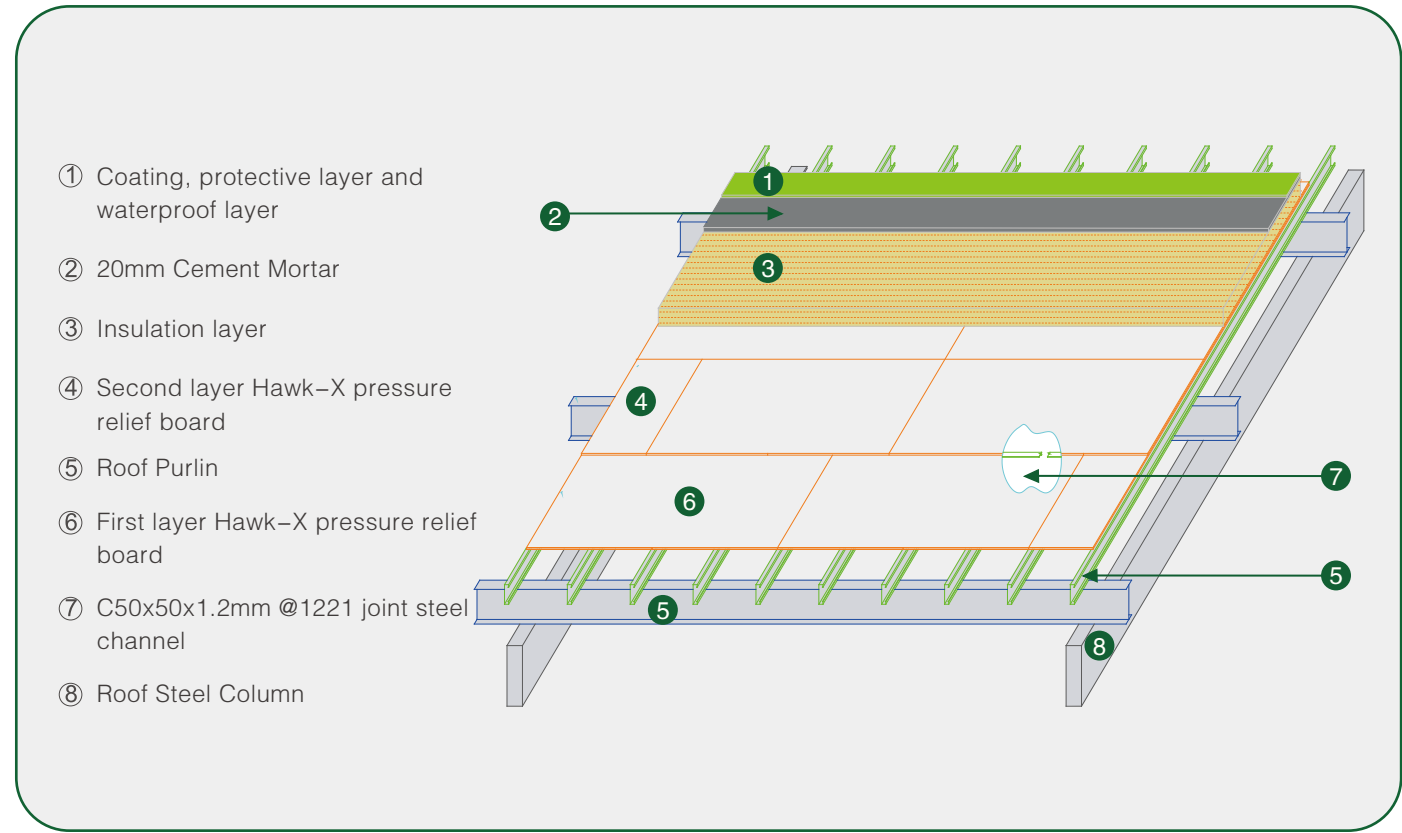
六、High level fireproof

According to the fire rating requirements of the building, the fire endurance of Hawk-X Pressure Relief external wall system can reach 4 hours.

七、Excellent heat insulation capability

Hawk-X Pressure Relief external wall system is filled with insulation materials, which can meet the insulation requirements of conventional projects. If higher insulation requirements are needed, the system structure can be adjusted through professional calculation to meet the requirements of internal and external insulation forms of external wall.

Hawk-X Pressure Relief Roof System



Hawk-X Pressure Relief Roof System

一、Rapid dispersion

Hawk-X Pressure Relief Board is light brittle material.

二、No secondary injuries

Hawk-X Pressure Relief Board is massive and powder, without sharp edges and corners, light in weight and low in density. The thermal insulation layer is light material, which is not easy to form secondary injury during pressure relief.

三、Wind pressure resistance, high strength

Hawk-X Pressure Relief Roof System, through professional calculation, can effectively reduce wind pressure, snow load and other loads caused by various adverse weather.

四、Light weight, seismic intensity

The total weight of Hawk-X pressure relief roof system shall not exceed 60kg / m2, which meets the requirements of the code and is very beneficial to the load and seismic resistance of the whole building.

五、Durable and Weather Resistance

Hawk-X Pressure Relief Board is autoclaved at high temperature and has good weather resistance. Under normal use conditions, it can meet the use requirements of 50 years.

六、High level fireproof

According to the fire rating requirements of the building, the fire endurance of Hawk-X Pressure Relief Roof System can reach 2 hours.

七、Effective and Reliable Roof Drainage

Hawk-X Pressure Relief Roof System only needs to rely on 5% of the structure for slope making, which can be drained by the level gutter or directly connected to the downpipe.



Hawk-B Blast Protection Board

Hawk-B blast protection board is a kind of anti-explosion material with high strength. The core layer is non asbestos calcium silicate fire-proof board, and the cover layer is high-strength punched galvanized steel plate. The inner and outer layers are occluded by mechanical pressure. It has the functions of super fire protection, explosion-proof, impact resistance and high water-pressure-jet resistance.

Technical Data

Standard Size mm	2400 X 1200 X 9.5
Density kg/m²	≤25
Water Content Rate %	≤10
Thermal Conductivity W/ (m.k)	≤ 0.20
Bending Strength Mpa	≥ 185 According to GB/T 7019
Modulus of Elasticity Gpa	≥72 According to GB/T 17657
Acid and Alkali Resistance	≥360hrs, after testing, there is no bubble, bulge or pulverization
Asbestos Content	Comply with HJ/T223-2005 Standard, asbestos free
Radioactivity	Comply with GB6566-2010 Standard, meet the requirements of grade A decoration materials
Non-combustibility	Comply with GB8624-2012, A1 non-combustible material

The above data is just for a reference, for more info, you could contact our technical department.
If you want to book other size boards, you are welcome contact our marketing center. +86-18101707889 (WeChat)





Steel Compositated Anti-Explosion Silicate Board

Made from environmentally friendly materials using fiber cement flat panels as the substrate, it is then combined with 0.5~0.8mm galvanized steel plates through advanced processes such as light pressing and curing. Additionally, a multi-layer inorganic coating with extremely strong weather resistance and highly stable color is baked onto the surface of the galvanized steel/aluminumplate, creating a new type of material.

Technical Data

Standard Size mm	2440 (300) x 1220 x (6-15)
Density kg/m³	1.6<D≤1.7
Moisture Expansion Rate %	≤0.25
Water Absorption Rate %	≤12
Flexural Strength (Air-Dried) Mpa	≥24
Flexural Strength (Water-Saturated) Mpa	≥22
Frost Resistance	Withstands 25 freeze-thaw cycles without cracking, delaminating, or crazing.
Impermeable to Water	After 24 hours of testing, no wet marks or water droplets appear on the reverse side
Resistance to Corrosion L/um	≥1.5
Gloss Deviation	≤10
Coating Adhesion	Grade 0
Wind Resistance Kpa	Positive Wind Pressure P3≥5.0; Negative Wind Pressure P₃≤-5.0
Coating Solvent Resistance	200 times, no exposure of the substrate.

The above data is just for a reference, for more info, you could contact our technical department.
If you want to book other size boards, you are welcome contact our marketing center. +86-18101707889 (WeChat)



Prefabricated: A Representative of Modern Architecture

Ministry of Housing and Urban-Rural Development "Outline for the Modernization of the Construction Industry": By 2025, prefabricated buildings will account for more than 50% of new buildings.



Shanghai New Buildings
Prefabrication Proportion



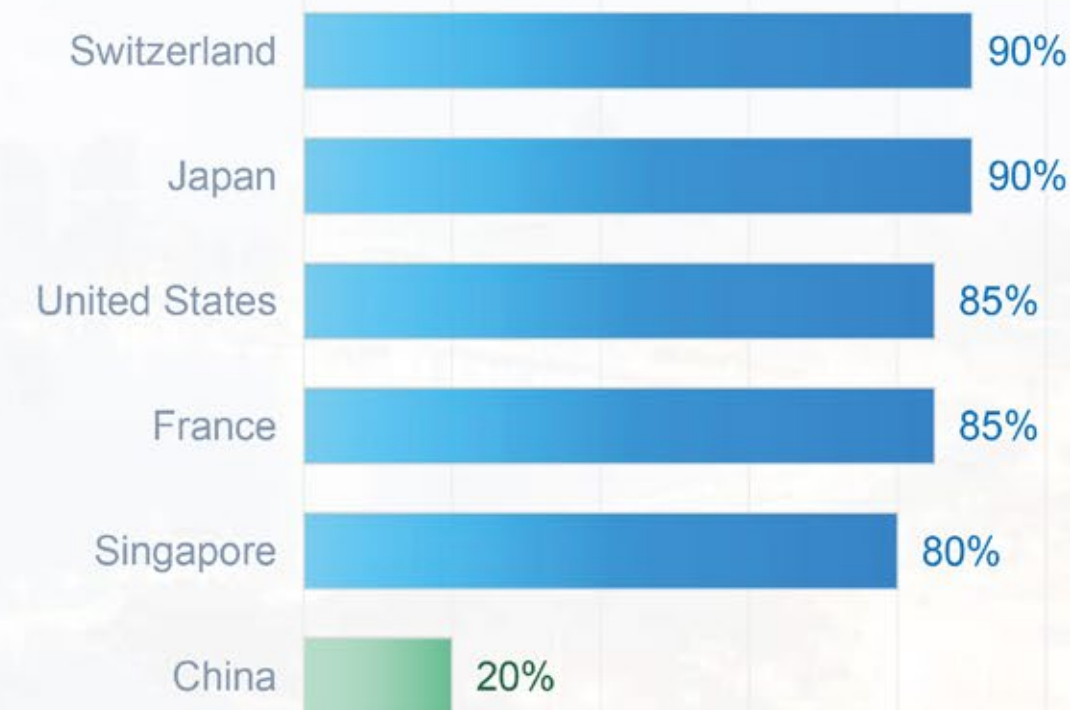
Beijing New Buildings
Prefabrication Proportion



Tianjin, Jiangsu, Zhejiang
New Buildings
Prefabrication Proportion

> 80%

Developed
Countries
Popularity Rate



Prefabricated: Good and affordable, all-in-one solution

The product of modern high-standard architecture



High Efficiency

The construction period is shortened by 50%
Dry construction
Unified installation on site
Ready to move in immediately



High Standard

Avoid manual craftsmanship deviation, all components are produced uniformly
Unified model specifications
Unified design standards



Cost Reduction

Scale effect
Reduce labor costs by 70%
Reduce time costs by 50%



More Flexible

Ready for renovation at any time, adapt to adjustments
The maintenance rate is reduced by 80%
Component modularization allows for individual disassembly and assembly
Renovations do not affect business operations

Steel Composited Anti-explosion Silicate Board

- ① Antibacterial Weather-resistant Fluorocarbon Layer
- ② Fully Enclosed Stamping Forming Aluminum-Zinc Plated Steel Panel
- ③ Internal Interface Coating
- ④ Reinforced Self-adhesive Coating
- ⑤ High level Calcium Silicate Board
- ⑥ Hydrophobic Coating
- ⑦ Aluminum Foil Composite Fiberglass Cloth



Solid Color



Solid Color



Solid Color



Continuous Antimicrobial



Grade A Flame Retardant



Alcohol-free and Environmental Friendly



Waterproof and Moisture-Proof



Clean and Stain-resistant

A new material that uses environmentally friendly high level fireproof calcium silicate panels as the substrate, and then combines them with 0.5~0.8mm galvanized steel plates through advanced processes such as light pressing and curing. Additionally, a multi-layer inorganic coating with extremely strong weather resistance and highly stable color is baked on the surface of the galvanized steel board.



Outdoor Application

Gadis Fiber Cement Decking Board
Gadis Fiber Cement Cladding Board
Gadis Fiber Cement Siding Board
Printed Fiber Cement Board



GADIS FIBER CEMENT DECKING BOARD

The main substrate of Gadis Decking Board (Fiber Cement Decking Board) are imported wood pulp, Portland cement, quartz powder; added other special materials, after pulping, molding, pressurized steaming, surface treatment, it becomes to be a board which is high–strength, easy to cut and drill, anti–corrosion, anti–worm moths, anti–mold, strong weather resistance, long service life. It will bring good step experience and good visual satisfaction when used as decking board for walk–way systems.

Gadis Decking Board (Fiber Cement Decking Board) can be used for the walkway of scenic spot, park, level platform, community walkway, the seaside viewing platform bridge, outdoor paving, balcony floor, outdoor decorative landscape plank and so on; it also could be used to be the railing, vine rack, Lang court, flower stand, flower box, fence, table and chair benches, the trash can, the decoration board for buildings.

Technical Parameter

Density	
Density g/cm³	≥1.5
Moisture Absorption %	≤28
Wet Swelling Rate %	≤0.25
Combustibility Performance	Grade A1 Non–combustible
Impermeability	After 24–hour inspection, no water droplets were found
Weatherability	
Anti–frozen	100 times frozen melting cirlce no cracking, no layer
Hot Rain Test	Fifty hot rain cycles, no cracks and delamination on the plate surface
Hot Water Test	The ratio of saturated flexural strength to saturated flexural strength is greater than or equal to 70% after 56 days immersion at 60 degrees Celsius
Immersion drying test	After 50 cycles of drying, the saturated flexural strength ratio is greater than or equal to 70%
Mildew Resistance Test	Antifungal property grade 0
Water Resistance	After 30days, no cracking, no layering, no falling off, no swelling and no color change were observed
Acid Resistance	After 15 days, no cracking, no layering, no falling off, no swelling and no color change were observed
Alkali Resistance	After 15 days, no cracking, no layering, no falling off, no swelling and no color change were observed
Environmental Protection Performance	
Toxicity of tobacco production	Complying with GB/T20285–2006 standard, safety level (AQ level)
Non–asbestos test	It conforms to HJ/T223–2005 standard and does not contain asbestos
Radioactivity	Complying with GB6566–2010 standard and meeting the requirements of Class A decorative materials
	IRA is less than or equal to 1.0
	Exposure index IR less than or equal to 1.0
Class A decorative materials, production, marketing and scope of application are unrestricted.	
Mechanical Property	
Saturated flexural strength	≥13
Specification and Size	
Length mm	2440
Width mm	100 150 190 250 300 350 400 1220
Thickness mm	25

The above data is just for a reference, for more info, you could contact our technical department.
If you want to book other size boards, you are welcome contact our marketing center. +86–18101707889 (WeChat)

CONTRAST of Decking Board

colour



棕色 Brown



胡桃色 Walnut



水泥本色 Grey White

CONTRAST of Decking Board

Product Characteristics	Fiber Cement Decking Board	Anticorrosive wood decking board	Wood/Bamboo Plastic Decking Board
Main Components	Portland Cement, Imported Pulp, Quartz Flour	Wood, Preservative	Wood, Bamboo Fiber and Plastics
Environmental protection	Green environmental protection, asbestos-free, formaldehyde-free, non-toxic, tasteless, recyclable	Toxic preservatives are corrosive, carcinogenic and consume a large amount of wood resources.	Toxic substances are easily produced during processing, which consumes part of wood resources.
Fire Resistance	Fire Resistance Class A1	Flammable, poor fire resistance	Fire-proof grade B1, easy to soften at high temperature.
Weatherability	Rainwater erosion resistance, aging resistance, 100 cycles of freeze-thaw without damage, deformation, cracking	Weather resistance is poor, dry shrinkage, wet expansion, easy to deform, serious corrosion.	Weather resistance is poor, easy to aging under sunshine, serious deformation.
Moisture-proof and moth-proof	Excellent	Commonly	Good
Rugged and Wear Resistant	Excellent	Poor	Good
Service Life	30 years	3 to 5 years	3 to 5 years
Cost performance	High performance-price ratio	Poor performance-price ratio	Poor performance-price ratio

Product Characteristics

1、High Strength

The board has high strength, saturated flexural strength is greater than or equal to 13MPA, and it forms an integral whole with the basic building, which can meet the needs of large-crowded areas.

2、Non-combustible Materials

Combustion performance meets the requirements of GB8624-2012 Classification of Combustion Performance of Building Materials and Products, the highest-level grade A1 requirements.

3、Weatherability

Through 100 freeze-thaw cycles, 50 hot rain cycles, 56-day hot water immersion test, water resistance, acid resistance and alkali resistance test, the Board meets the requirements of JC/Y "Fiber Cement Plate Part I: Asbestos-free Fiber Cement Plate" A product standard, and can be applied to severe cold and bad climate areas.

4、Anti-slip, grinding resistance

High density inorganic fiber cement boards with crystal structure of tobermorite. It has good anti-slip and grinding resistance capabilities, according to the test result, it could meet all the requirement which national standard had mentioned.

5、Environmental protection and energy saving

KINGTEC products do not contain asbestos, no radioactivity, meet the requirements of national class A decorative materials standards, no formaldehyde release. Obtained the green labeling certificate of environmental signs issued by the National Environmental Protection Administration.

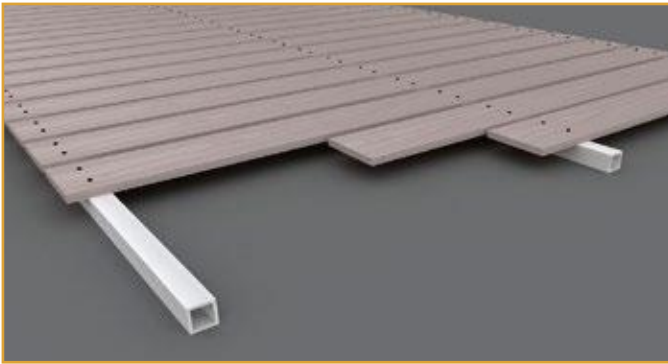
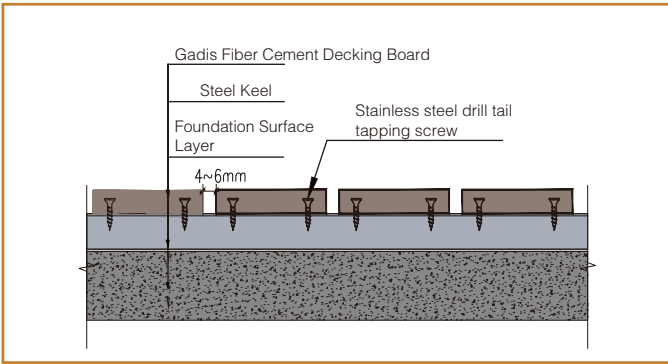
6、Rich in Color

Flexible and changeable colors, through-body color, natural cedar texture, give full play to the designer's imagination, and provide some inspiration for the construction of landscape trestle.

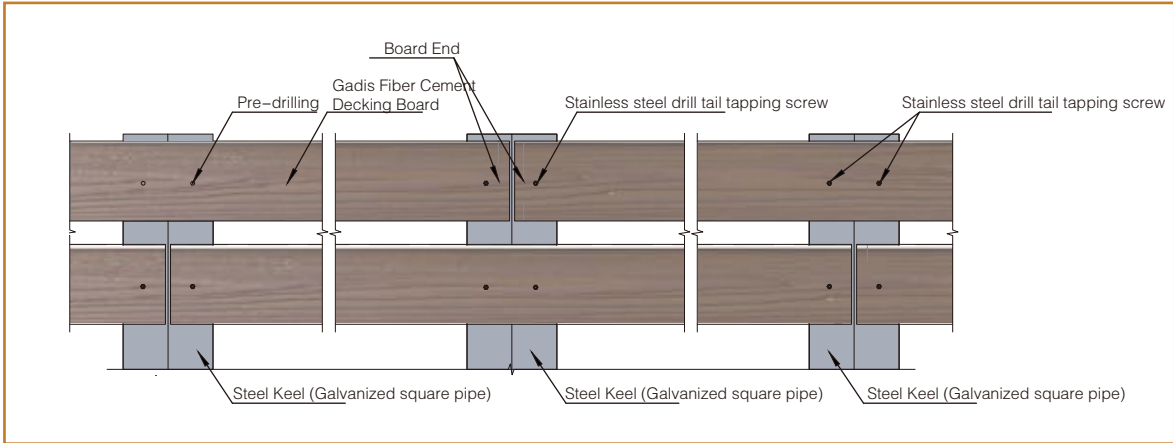


Feature of Decking Board System

- 1. Structural safety, high load, to meet the strength requirements of the trestle.
- 2. Long service life, 30 years of normal use without maintenance.
- 3. Simple construction, dry operation, modular construction, convenient and fast.
- 4. Beautiful, cedar texture surface, can achieve the beautiful effect of wood.
- 5. Easy to process, in the construction site, can be arbitrarily cut to meet the design requirements.



Planning of Fiber Cement Decking Board and Steel Keel Layout



Plane diagram of connection between Fiber Cement Decking Board and Steel Keel

- 1. Concrete base or steel structure base is set at the bottom of the trestle, and the elevation and section of the base are in accordance with the design requirements.
- 2. Set out the line at the construction site and mark the location line and fixed point of keel installation.
- 3. The steel keel is installed with galvanized square pipe, and the cross-section size is in accordance with the design requirements. The steel keel is fixed on the base of concrete or steel structure by galvanized corner code.
- 4. Install the fiber cement decking board, the board is fixed on the steel keel with self-tapping screw, the elastic line and the fixed point of the board are marked, and the board surface is treated with countersunk head (the aperture is slightly larger than that of the screw head, and the hole is 1–2 mm), so as to facilitate the screw head to sink into the board surface.
- 5. Installation requirements of fiber cement decking board: when board is fixed, it should be close naturally and not in place under high pressure; board and steel keel should be pre-drilled (if high-strength tapping screw is selected, no pre-drilling is needed), and the hole diameter is 1 mm smaller than the screw diameter.



1.High Strength

The panels exhibit high strength, with a water-saturated flexural strength of $\geq 13\text{MPa}$. They form an integral whole with the foundation, suitable for areas with heavy foot traffic.

2.Strong Weather Resistance

The panels have passed 100 freeze-thaw cycles, 50 thermal rain cycles, and 56 days of hot water immersion tests. They are also resistant to water, acid, and alkali, making them suitable for use in harsh climates and severe weather conditions.

3.Completely Non-Combustible Material

The combustion performance meets the highest level A1 requirements of GB8624-2012 "Building Materials and Products Combustion Performance Grading."

4.Environmental Protection and Energy Saving

KingTec products are asbestos-free and meet the national Class A decorative material standards for radioactivity. They do not release formaldehyde and have been certified by the National Environmental Protection Agency with the ten-ring environmental label.

5.Rich Colors

Flexible and varied colors, uniform throughout, with natural cedar textures, provide designers with abundant imagination and inspiration for the construction of landscape walkways.

6.Anti-Slip and Wear-Resistant

High-density inorganic panel crystal structure ensures good anti-slip and wear resistance. Upon testing, they meet all standard requirements.

Gadis Decking System Applications

Project Case Studie



▲ **Guangzhou Haizhu National Wetland Park** is located in the southeast corner of Haizhu District, Guangzhou City. It is a typical composite wetland system of urban lakes and rivers in the Pearl River Delta, with an area of approximately 1100 hectares. The park features lush greenery, diverse wildlife, and rich cultural heritage, providing a natural oasis in the heart of the city. The park is home to over 583 animal species, including 177 types of birds, 285 types of insects, and various amphibians and mammals. There are also more than 600 plant species, making it a biodiversity hotspot.

Gadis Decking System Applications

Project Case Studie

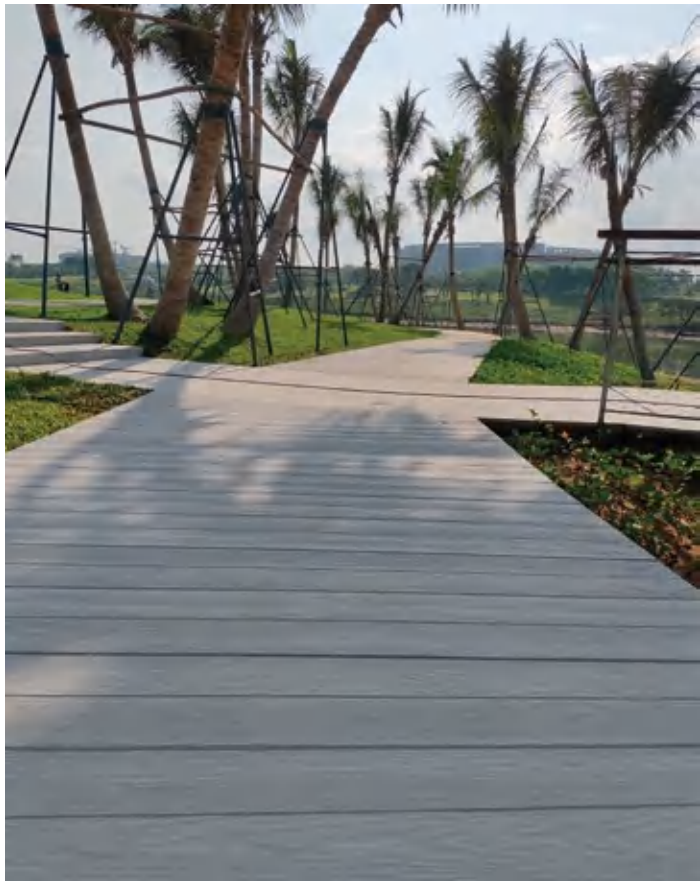


▲ Pingxiang City Louxi Lake



Gadis Decking System Applications

Project Case Studie



▲ **Sanya Dolphin Bay** is located in Sanya City, Hainan Province, China. It is a popular tourist attraction themed around marine life. The bay boasts a beautiful natural environment with abundant sunshine, clear waters, and pristine white sandy beaches, offering visitors an excellent vacation experience.

Gadis Decking System Applications

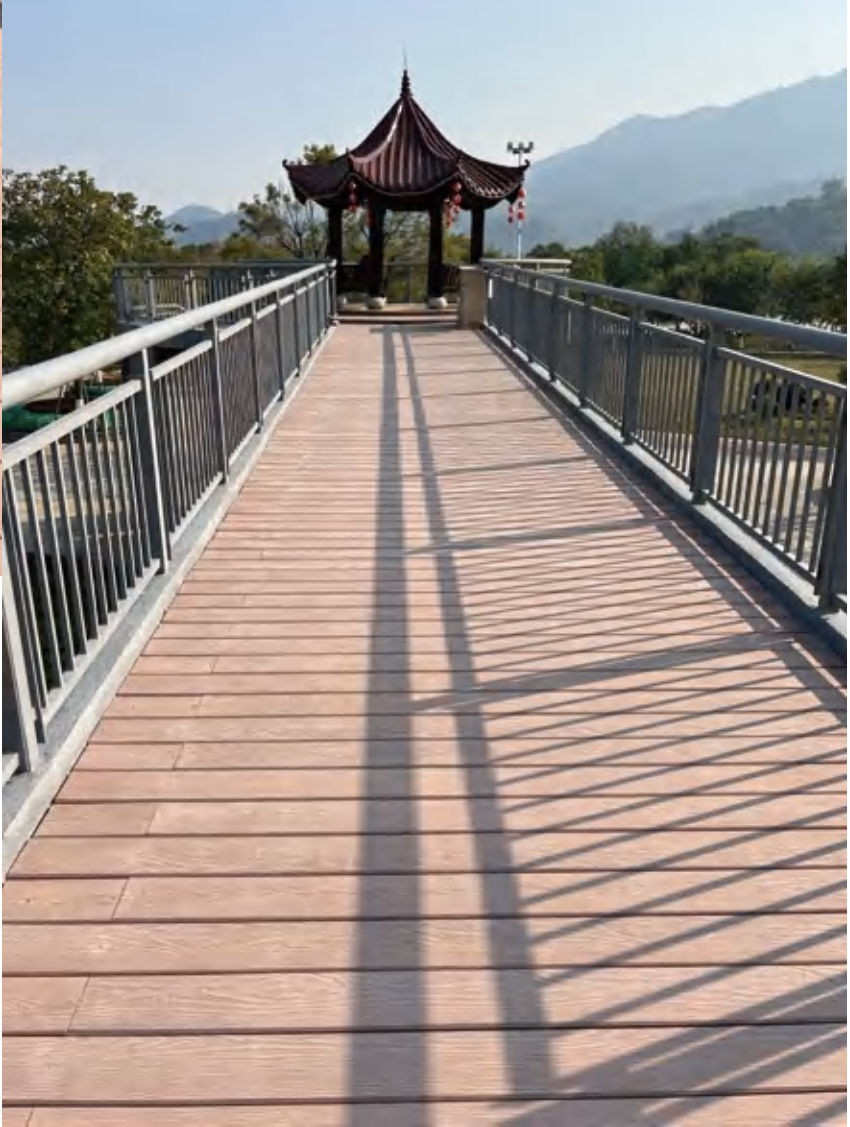
Project Case Studie



▲ Fuzhou Huangqi Yandunding Lighthouse

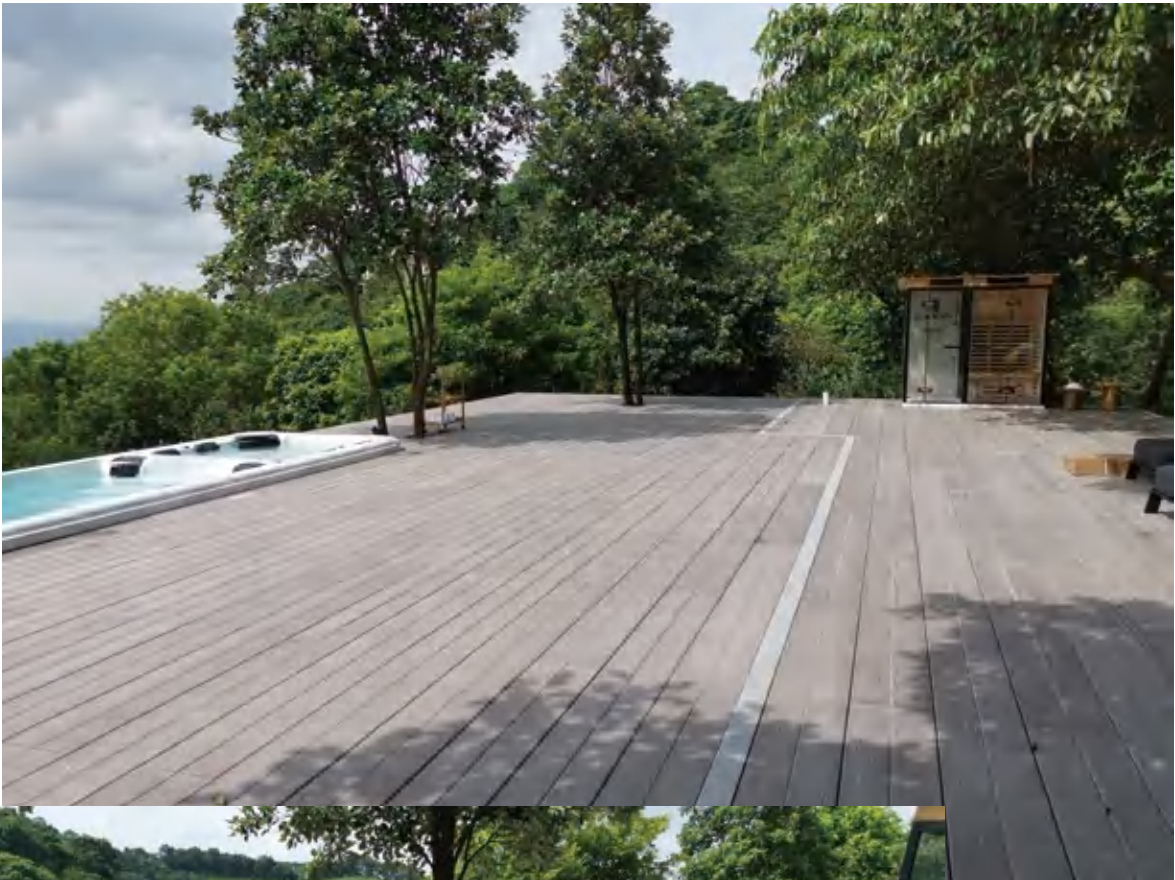


▲ Fuzhou Lianjiang Xibin Park





▲ Ganzhou Shangyou County Huangsha Area Hydrophilic Wetland Park



▲ Guangzhou Ketianxia Resort



▲ Jiangmen Gudou Hot Spring Villa



▲ Chongqing Hai Shi Park (Fei Ran Lake)



 **Fujian Changtianxi Trail Landscape Enhancement Project**



 **Mingyue Mountain Hydrophilic Wooden Trail Renovation Project**



Gadis Fiber Cement Siding Board

Gadis Fiber Cement Siding Board is a kind of fiber-reinforced cement board, which is made of Portland cement, quartz powder, many other mineral materials and natural plant fiber. It was treated by high temperature autoclave curing. After special treatment, it has the effect of natural real wood grain.。

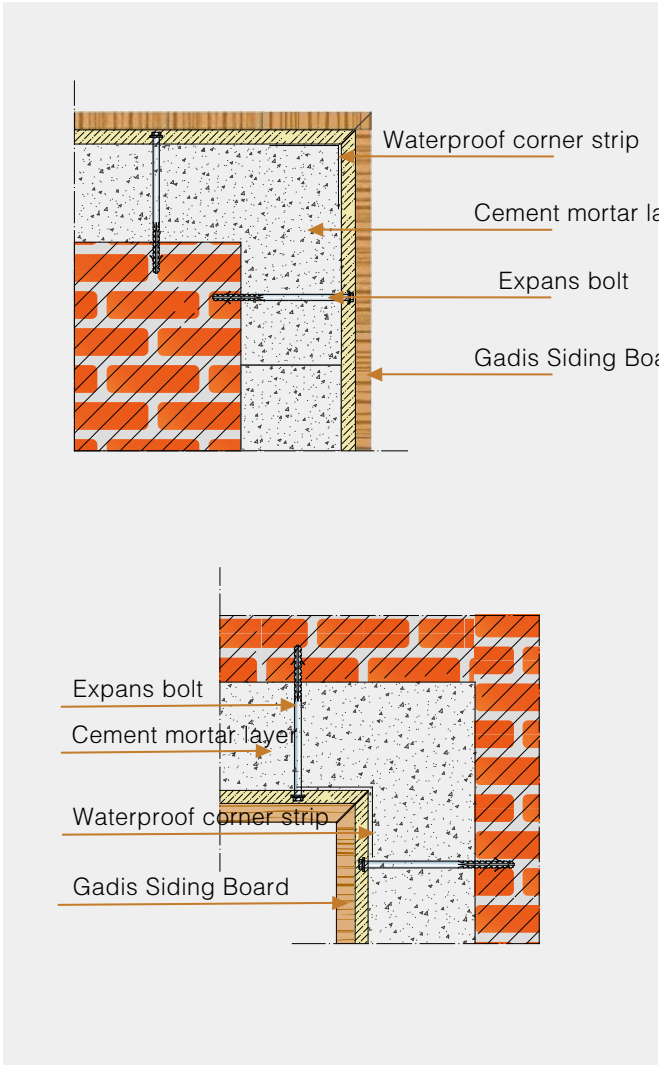
Technical Index

Standard Size mm	190 X 3000 X (7、9)
Density g/cm³	1.30 ± 0.1
Thermal conductivity W/ (m.k)	≤0.20
Water absorption %	≤35
Bulking Rate %	≤0.20
Water impermeability	No water drop at the bottom
Frost-resistant	No cracking or peeling
incombustibili	GB 8624Class A1
Bending strength (Dry)	≥ 10
Bending strength (Water saturated)	≥ 7
Radioactivity	Internal Exposure Index IRa≤0.20; External Exposure Index Ir≤0.25 Grade A decoration materials, unlimited production, marketing and application range.
Mould Resistance	Comply with HG/T3950-2007, Grade 0
Asbestos Content	Comply with HJ/T223-2005 Standard, asbestos free

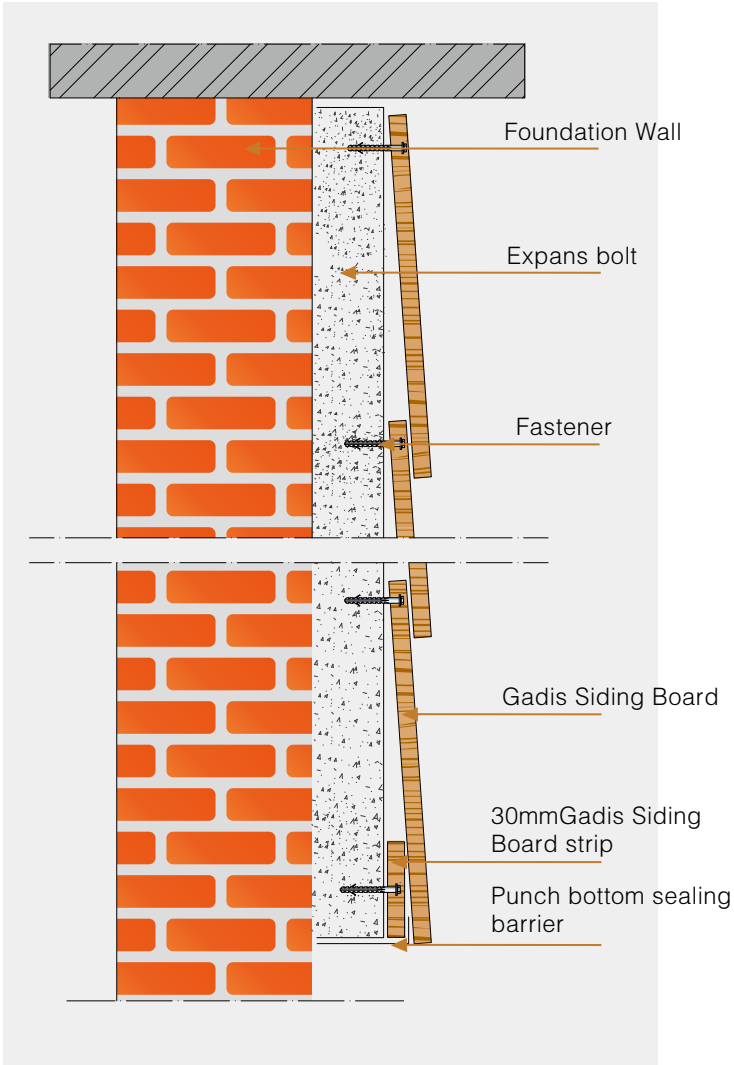
The above data is just for a reference, for more info, you could contact our technical department.
If you want to book other size boards, you are welcome contact our marketing center. +86-18101707889 (WeChat)



Gadis Fiber Cement Siding Wall System

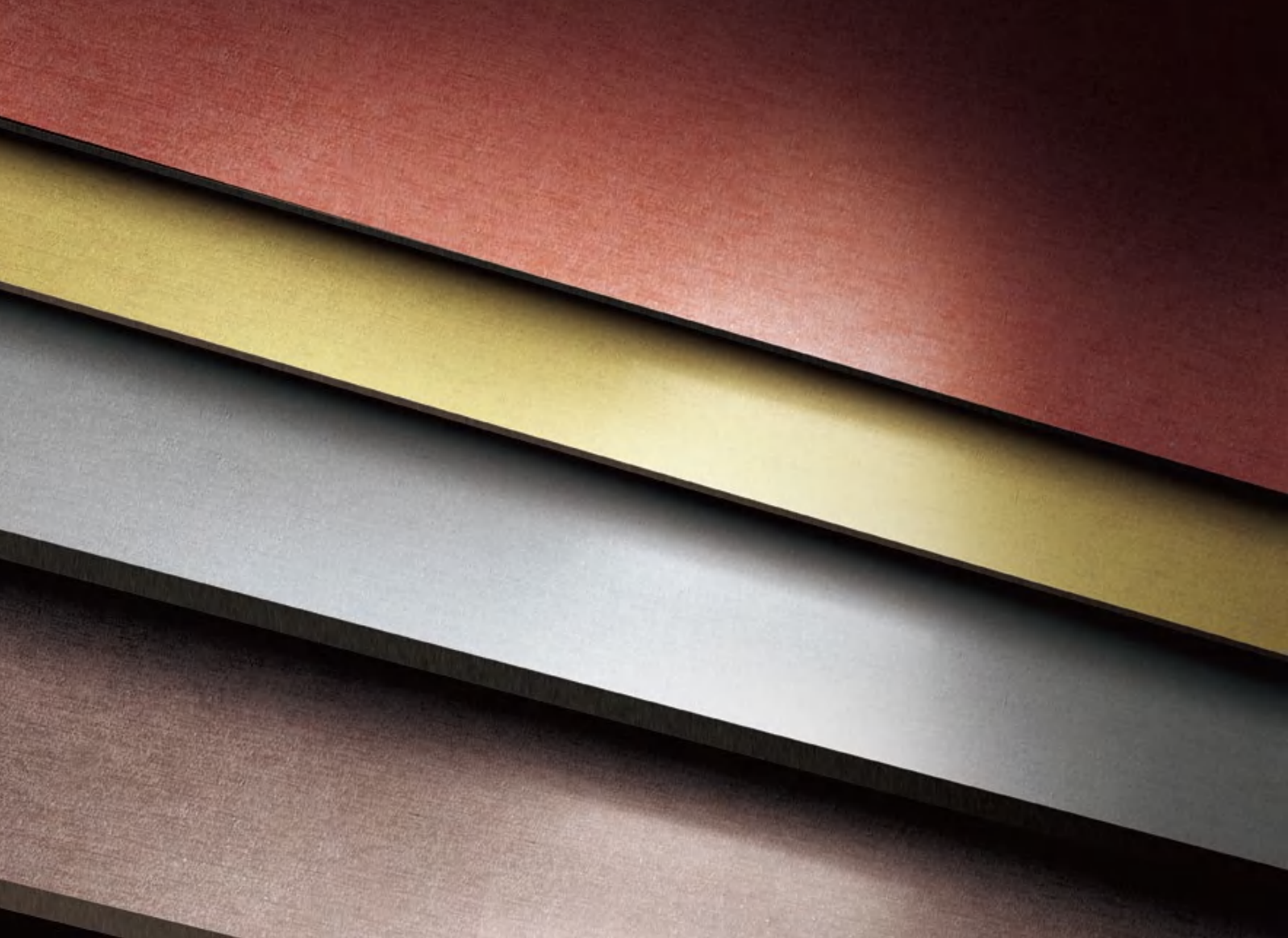


- 1. Fix board with special nylon tapping anchor bolt in the brick and concrete. If the wall is not smooth, use cement mortar screed to level up and down, in order to provide a flat base for Gadis Siding Board.
- 2. If use insulation materials, then the surface of the insulation materials should be treated by cement mortar pad.
- 3. The length of nylon tapping anchor bolt depends on the distance from siding board to the foundational wall, the diameter is usually 6mm.
- 4. The size of vertical lapping between the upper and lower siding board must be larger than 30mm but never over 50mm.



- 5. To achieve stereoscopic effect, when installing the bottom siding board, pave it with 30mm width backing board.
- 6. The bottom gap shall be sealed with perforated screen board.
- 7. The vertical keel is fixed on the foundation wall with anchors. The maximum spacing between anchors is 800mm. It is recommended to use at least 3 anchors for each keel. When the elevation height is very high, when the vertical keel butt joint, the anchor can choose to knock nylon anchor bolt.





Gadis Fiber Cement Cladding Board

Gadis Fiber Cement Cladding Board is a new type of green environmental protection board developed by Kingtec, which does not contain asbestos or other harmful substances. The color of the board is uniform, simple and steady, natural and generous. It maintains its natural texture and color, reflecting its high-grade quality of home decoration and no carving.

Technical Index

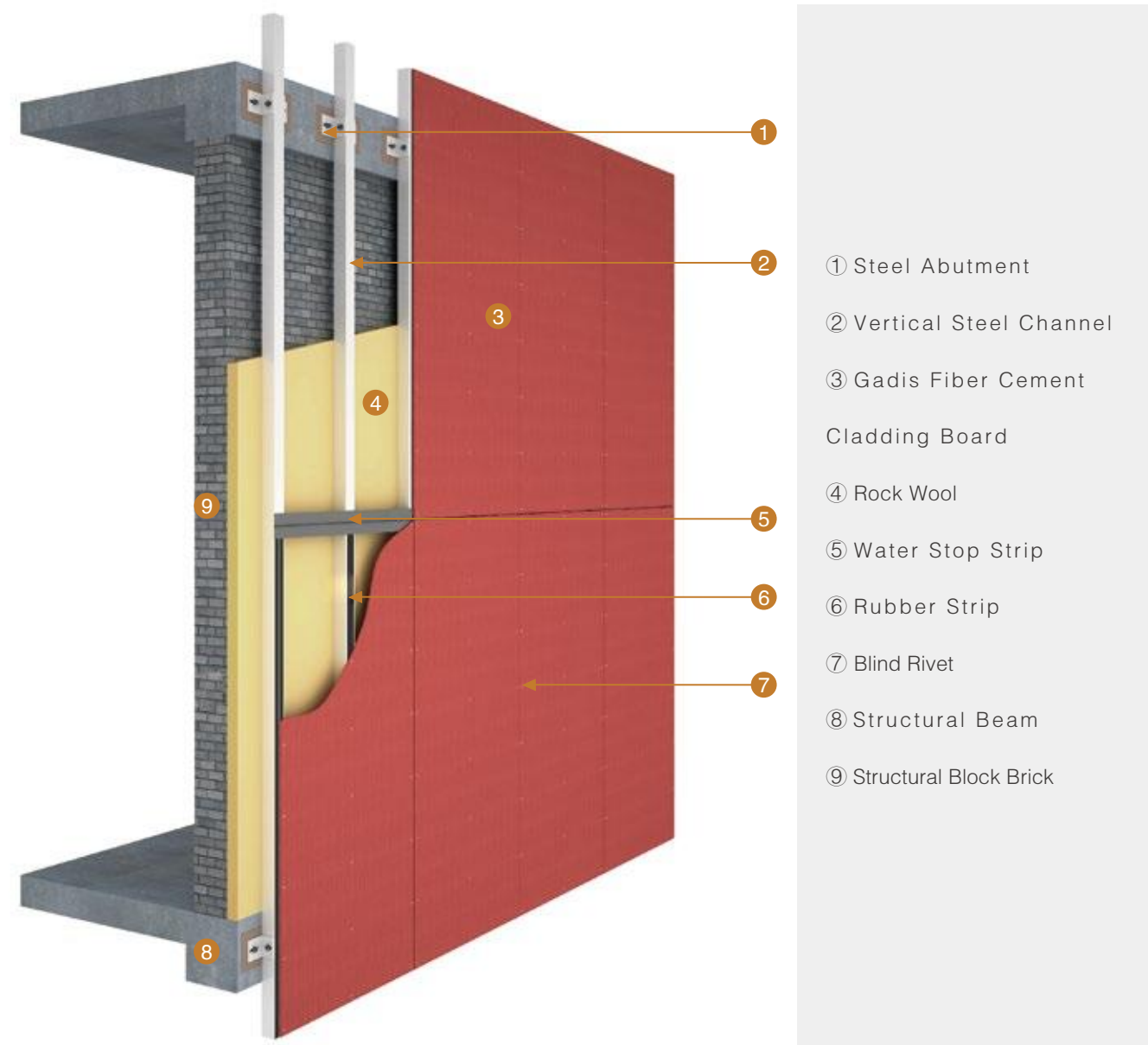
Standard Size mm	2440 X 1220 X (9、12)
Density g/cm³	1.45 ± 0.1
Density g/cm³	≤ 10
Bulking Rate %	≤ 0.25
Thermal Conductivity W/(m.k)	≤ 0.35
Frost Resistance	100 freeze–thaw cycles, no cracking, no delamination, no shedding
Water Impermeability	No water drop detected by 24hrs
Non combustibility	Comply with GB8624–2012, A1 non–combustible material
Radioactivity	Internal Exposure Index IRa≤0.20; External Exposure Index Ir≤0.25 Grade A decoration materials, unlimited production, marketing and application range.
Asbestos Content	Comply with HJ/T223–2005 Standard, asbestos free

The above data is just for a reference, for more info, you could contact our technical department.
If you want to book other size boards, you are welcome contact our marketing center. +86–18101707889 (WeChat)



External Wall Installation System of Exposed Nails

Invisible Card Type Dry Hanging External Wall Installation Syste



SYSTEM INTRODUCTION

It is composed of Gadis Fiber Cement Cladding Board and support structure system (support device and support structure), which has a certain displacement capacity or its own deformation capacity relative to the main structure, and does not bear the role of the main components of the building peripheral parapet. Gadis Fiber Cement Cladding Board and support structure system are fixed with stainless steel blind rivets.

APPLICATION RANGE

It can be widely used in the exterior wall decoration of all kinds of schools, commercial buildings, residential or industrial buildings, as well as in the interior wall decoration, such as airports, tunnels, subways, stations, meeting rooms, specialty stores or bars.



SYSTEM INTRODUCTION

The invisible card type exterior wall enclosure curtain wall is fixed by aluminum alloy profile, and Gadis Fiber Cement Cladding Board is processed by special process slotting, forming the invisible card type dry hanging system after installation. Boards' interface position alphabet slot butt joint, no need sealant to seal, update the beauty of the materials!

APPLICATION RANGE

Widely used in Museum, gymnasium, exhibition center, office building, school, residential, commercial building, industrial building and other facade decoration projects.

KINGTEC & Dutch PARX

Jointly Launch

The Super Long-lasting

Non-leaching

Antiviral Rate 99.99% Decorative Cement Board





KingTec
Antiviral
Rate
99.99%
Board

Standard
Wall
Panel



**A building material that prevents the adhesion
of bacteria and viruses.
Continuously Clean and Safe Medical Environment
Prevent Contact with Pathogens in the Hospital**

KingTec&Dutch Parx Antibacterial Technology

Parx Materials: A leading medical antibacterial enterprise headquartered in the Netherlands. Listed on the French Euronext in 2018. Pioneered the first micron-level non-leaching antibacterial technology, addressing the safety and sustainability shortcomings of traditional technologies, serving over 20 Fortune 500 companies.

Now, KINGTEC has partnered to introduce it from the field of human implant anti-infection, successfully bringing it into the medical antibacterial boards for building materials after repeated experimental tests, all in order to provide the most sustainable antibacterial technology domestically.



Traditional Antibacterial Technology

Ion Dissolution Principle:

Relying on Nano/Ion Release to Destroy Cell Membranes



1. Short Shelf Life

As ions continue to be released, the antibacterial property decays.

2. Nanotoxicity

The released ions or nanoparticles (such as silver nanoparticles, which are already restricted in Europe and America) can be absorbed by the human body, posing safety risks.

Silver Ion

Silver
Nanoparticles

Copper Ion

Triclosan

Quaternary
Ammonium Salt

Netherland•Parx

Comparison with Traditional Antimicrobial Methods

The non-leach technology ensures no ion migration, making it safe, and the antimicrobial properties last for the lifetime of the material.

Parx

Non-leach principle
Repels bacterial
adhesion.

Durability antimicrobial test
>99.99%

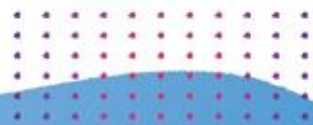
Biocompatible
non-cytotoxic.

Traditional antimicrobial

Leaching ions
Disrupt bacterial cell
membranes.

Decays over time
Significant difference after
six months.

Cytotoxicity
Component leaching,
safety hazards.



Create a Molecular Force Barrier Layer: Prevent Bacterial Adhesion

1
Bacteria have a tendency to adhere to surfaces before they can proliferate! By creating a molecular repulsion force barrier layer in the material, bacterial adhesion is prevented.

Form a 10~20nm
Repulsion Force
Barrier Layer

Molecular Force Barrier
Layer

Parx Materials

2
The repulsion force of the barrier layer prevents bacteria from adhering, and simultaneously, bacteria cannot move upon contact with the barrier, losing their activity! Achieving an antibacterial rate of >99.99%.

Parx Customer Feedback



"Based on the test results, this technology is considered one of the most sustainable antimicrobial technologies in the world today."

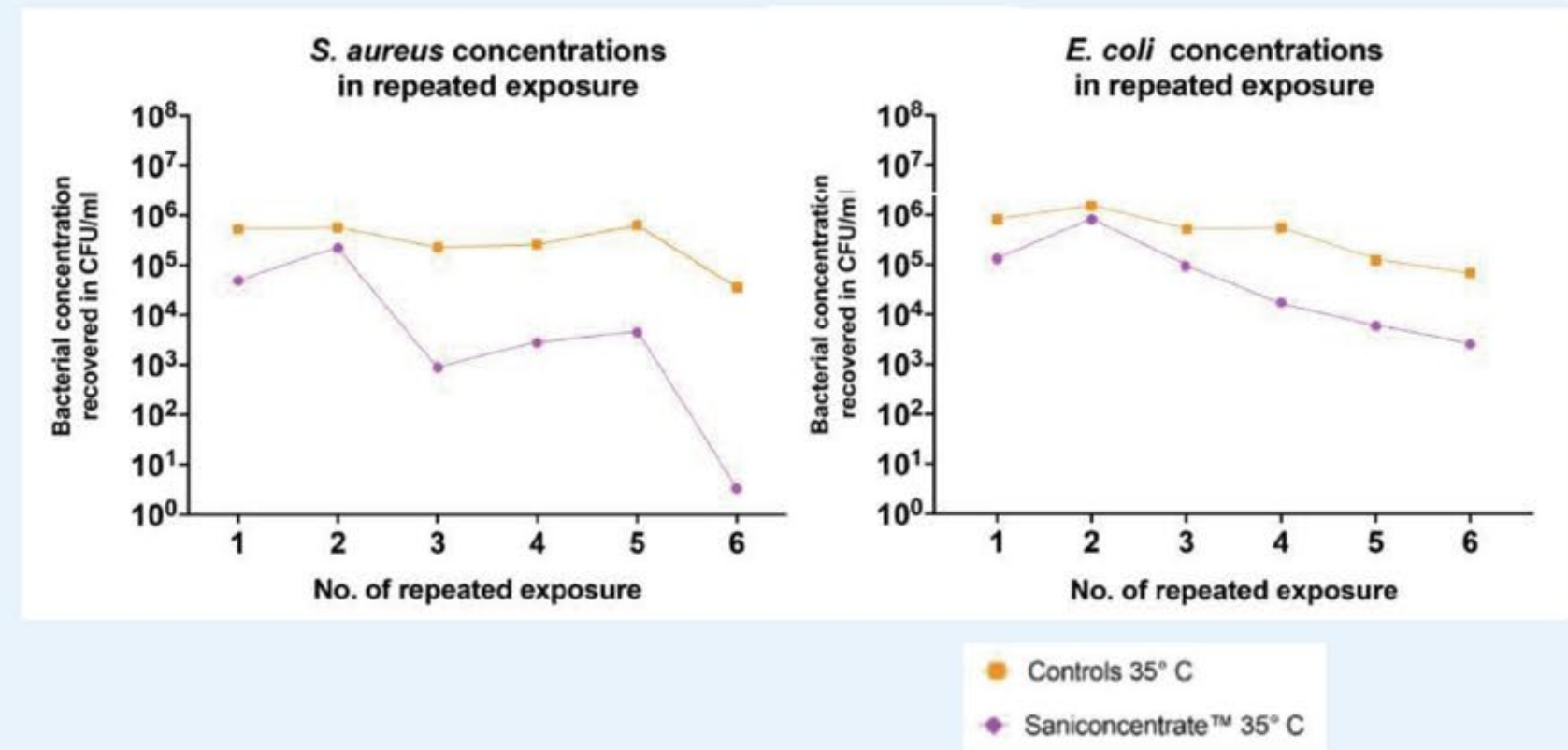
H. Bengtsson
Chief Expert

S. Wareham
Matthiassen
Doctor of
Philosophy

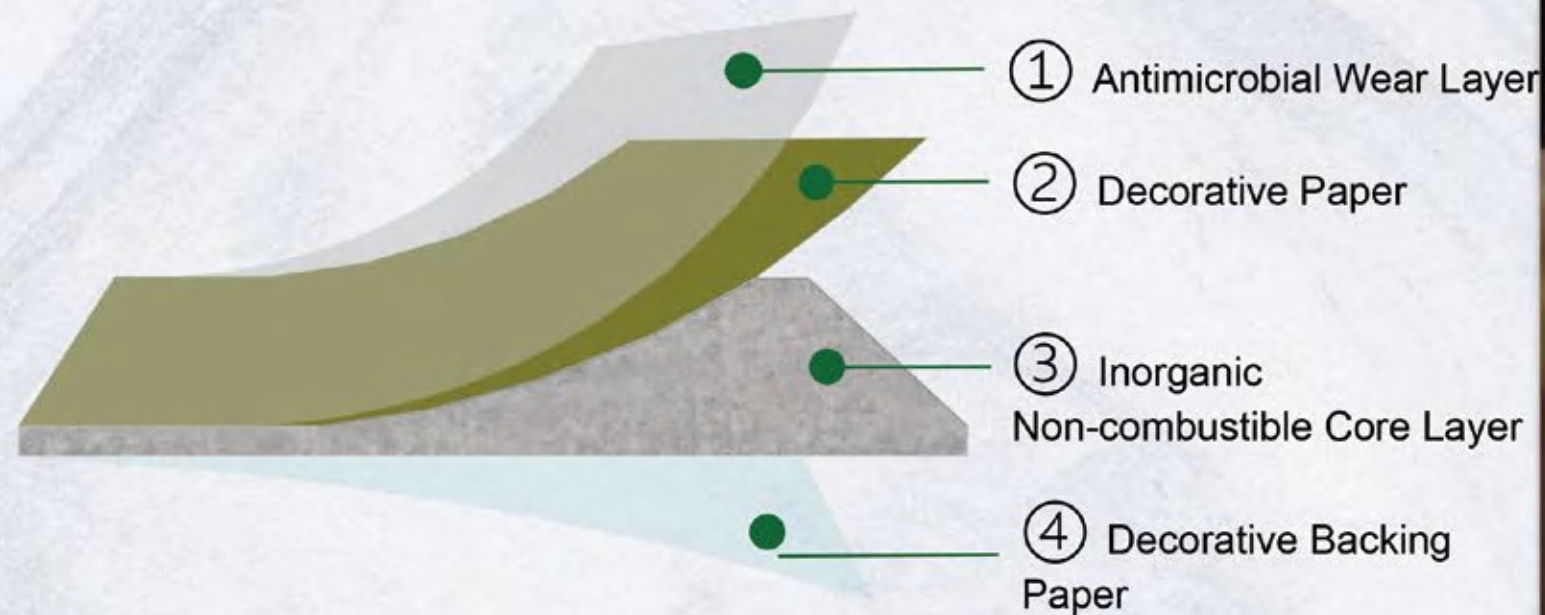


"Over time, it is expected that the bacterial inoculum would become weaker; however, the antimicrobial effectiveness of Parx material remains consistent with no signs of resistance."

—Novo Nordisk Testing

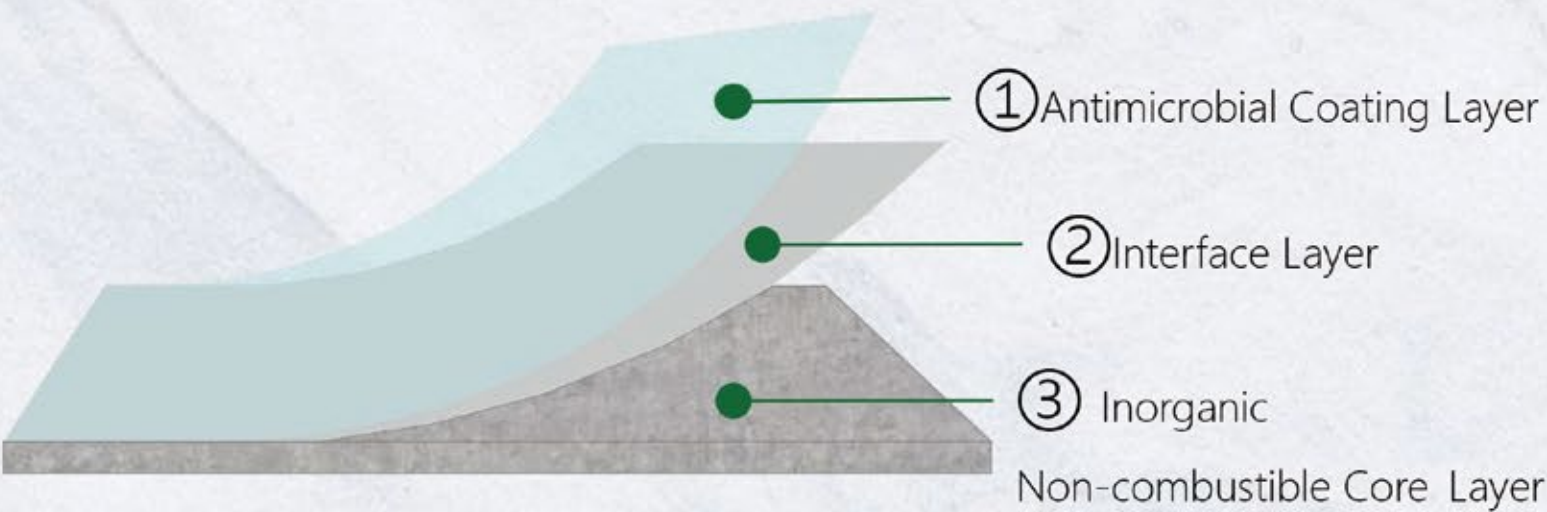


Antimicrobial Decorative Cement Board



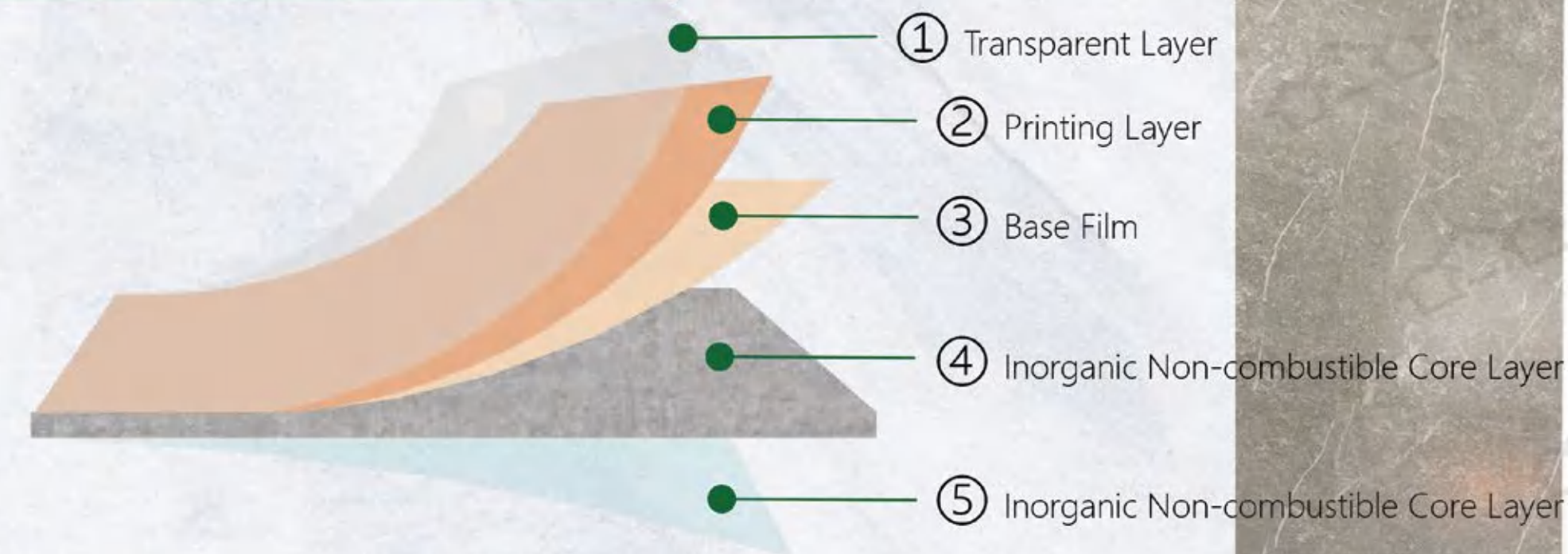
It is made from environmentally friendly materials, using asbestos-free fiber cement flat panels as the substrate. The surface is treated with a primer process and combined with high-pressure decorative non-combustible boards using specialized equipment at high temperature and pressure. It features enhanced tensile strength and impact resistance, while better showcasing the texture and tactile quality of the surface.

Antimicrobial UV Pre-coated Cement Board (Medical Armor Panel)



Using fiber cement board as the substrate, the surface undergoes 16 processes including sealing, sanding, impregnation, and waterproofing. It is then roller-coated with UV primer, and a specially formulated UV antimicrobial finish paint is applied evenly over the treated substrate using large-scale UV coating equipment. The antimicrobial coating is cured using light-curing equipment to create a new type of board specifically designed for public health spaces, offering ultimate protection against various contaminants.

Antimicrobial PVC Coated Decorative Cement Board



Wood Grain



Fabric Grain



Stone Grain



Cement Gray



Continuous Antimicrobial



Grade A Flame Retardant



Alcohol-free and Environmental Friendly



Waterproof and Moisture-Proof



Clean and Stain-resistant

Made from environmentally friendly materials using asbestos-free fiber cement panels as the substrate, it undergoes multiple stringent grinding and sealing processes before being combined with high-end PVC decorative film. KingTec Antimicrobial PVC Fireproof Coated Decorative Cement Board can be freely matched with wood grain, fabric grain, leather grain, stone grain, and solid color series products, featuring a rich array of colors, clear textures, and a diverse selection of patterns. In addition to its lifelike visual appeal, it employs cutting-edge mold technology to perfectly replicate the natural texture and tactile sensation.

Features of KingTec Decorative Cement Board:

Extra-Long Lasting

Non-leaching antibacterial, the antibacterial property lasts for the life of the material.



No Resistance

Molecular force captures bacteria, preventing bacterial resistance.



Extra Safe

It does not release physical antimicrobial agents; does not participate in chemical reactions.



Data: Broad-spectrum, effective against bacteria and viruses.



bacteria

Test Standard: ISO 22196
JIS Z2801
ASTM E2149
ISO 20743
FZ/T73023

Broad-spectrum efficacy:

>99.9%

Staphylococcus aureus
Staphylococcus epidermidis
Clostridium difficile
Listeria monocytogenes

Staphylococcus aureus (MRSA)

Streptococcus mitis
Streptococcus sanguinis
Hemolytic streptococcus

Escherichia coli
Salmonella

Acinetobacter baumannii (multidrug-resistant)

Pseudomonas aeruginosa
Enterobacter cloacae

Legionella pneumophila

Fusobacterium nucleatum
侵蚀艾肯菌 Aggregatibacter
actinomycetemcomitans

Klebsiella pneumoniae

Propionibacterium acnes



virus

Test Standard: ISO 18184
ISO 21702

Novel coronavirus (SARS-CoV-2)

Influenza A virus subtype H1N1

Human papillomavirus type 16 (HPV16)

....



mold

Candida auris

Candida albicans
Aspergillus niger
Trichosporon spp.



通过全球权威机构测试验证:

SGS



Intertek



ACCREDITED



KingTec Antiviral 99.99% Decorative Cement Board

World First, global innovation!

SGS

Test Report

ASH24-0033025-04

Date: 2024-10-18

Sample Description:

Sample No.	SGS Sample ID	Description
1	ASH24-0033025-0001	sample in bag

Test Result(s):

Test Requested: Selected test(s) as requested by applicant

Test Method: ISO 21702:2019 Measurement of antiviral activity on plastics and other non-porous surfaces

ASH24-0033025-0001

Test virus strain: Virus strain and host cell Influenza A virus H3N2 ATCC-VR-1679, MDCK cell ATCC-CCL-34

	Logarithm of infectivity titre value recovered from the untreated test specimens immediately after inoculation (lgTCID ₅₀ /cm ²)	Logarithm of infectivity titre value recovered from the untreated test specimens after 24h (lgTCID ₅₀ /cm ²)	Logarithm of infectivity titre value recovered from the treated test specimens after 24h (lgTCID ₅₀ /cm ²)
sample 1	6.05	5.17	2.30
sample 2	5.92	5.05	2.17
sample 3	6.05	5.05	2.30
Average logarithm of infectivity titre value (lgTCID ₅₀ /cm ²)	6.01	5.09	2.26
Average infectivity titre value (TCID ₅₀ /cm ²)	1.03×10 ⁶	1.24×10 ⁵	1.82×10 ²
Mv:Antiviral activity value		2.83	
Antiviral activity rate(%)*		99.9	

Notes:

- The method to determine the infectious titre: TCID₅₀ method.
- Untreated test specimen: Polyethylene plastic film provided by SGS lab.
- Size, shape and thickness of untreated test specimen: 50mm*50mm, square, <1mm
- Size, shape and thickness of treated test specimens: 50mm*50mm, square, <10mm
- Size, shape and thickness of the cover film: 40mm*40mm, square, <1mm
- Sterilization of antiviral fabric specimen: The specimen was soaked in sterile water for 24 hours and then exposed to ultraviolet radiation for 30 minutes.
- Contact time of the inoculated specimens: 24h
- The volume of test virus inoculum used: 0.4mL
- The concentration of the virus inoculum suspension: 1.3×10⁷ TCID₅₀/mL
- * Antiviral activity rate(%) calculate formulation: $[(B-C)/B] \times 100$
- B: Average infectivity titre value recovered from the untreated test specimens after 24h (TCID₅₀/cm²)
- C: Average infectivity titre value recovered from the treated test specimens after 24h (TCID₅₀/cm²)
- This test report is in Chinese and maybe translated into other languages, the Chinese version shall prevail.

SGS-CSTC Standards Technical Services (Shanghai) Co., Ltd.
Page 2 of 3



Unless otherwise agreed in writing, this document is issued by the Company subject to its General Conditions of Service printed overleaf, available on request or accessible at <https://www.sgs.com/sgs/Service-Conditions>. Attention is drawn to the limitation of liability, indemnification and jurisdiction issues defined therein. Any holder of this document is advised that information contained herein reflects the Company's findings at the time of its intervention only and within the limits of Client's instructions, if any. The Company's sole responsibility is to its Client and this document does not constitute parties to a transaction from exercising all their rights and obligations under the transaction documents. This document cannot be reproduced, stored in a retrieval system or used in any way for any purpose other than the intended use. Any unauthorized alteration, forgery or falsification of the content or appearance of this document is unlawful and offenders may be prosecuted to the fullest extent of the law. Unless otherwise stated the results shown in this test report refer only to the sample(s) tested. Attention: To check the authenticity of testing, inspection report & certificate, please contact us at telephone: 86-21-5891 1660, or email: CN_Sales@sgs.com

3F Building, No. 888, Yuhuan Road, Kunshan District, Shanghai, China 200225
中国·上海·锦汇区宜山路888号3楼 邮编: 200225

1 86-21-5891 1660 www.sgs.com.cn
1 86-21-5891 1660 sgs.cn@sgs.com

Member of the SGS Group (SGS SA)

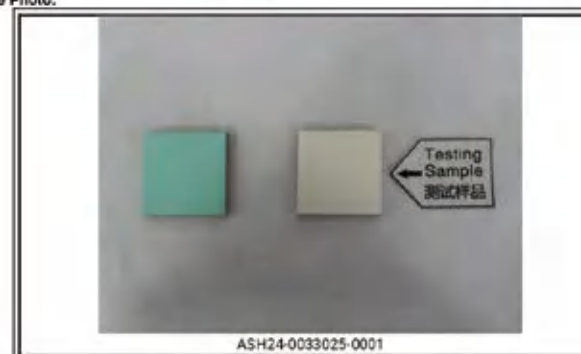
SGS

Test Report

ASH24-0033025-04

Date: 2024-10-18

Sample Photo:



SGS authenticate the photo on original report only

Attention:
Unless otherwise stated the results shown in this test report refer only to the items tested. This document cannot be used for improper publicity, without prior written approval of the SGS.
*** End***



Average logarithm of infectivity titre value (lgTCID₅₀/cm²)

6.01

5.09

2.26

Average infectivity titre value (TCID₅₀/cm²)

1.03×10⁶

1.24×10⁵

1.82×10²

Mv:Antiviral activity value

2.83

Antiviral activity rate(%)*

99.9



Unless otherwise agreed in writing, this document is issued by the Company subject to its General Conditions of Service printed overleaf, available on request or accessible at <https://www.sgs.com/sgs/Service-Conditions>. Attention is drawn to the limitation of liability, indemnification and jurisdiction issues defined therein. Any holder of this document is advised that information contained herein reflects the Company's findings at the time of its intervention only and within the limits of Client's instructions, if any. The Company's sole responsibility is to its Client and this document does not constitute parties to a transaction from exercising all their rights and obligations under the transaction documents. This document cannot be reproduced, stored in a retrieval system or used in any way for any purpose other than the intended use. Any unauthorized alteration, forgery or falsification of the content or appearance of this document is unlawful and offenders may be prosecuted to the fullest extent of the law. Unless otherwise stated the results shown in this test report refer only to the sample(s) tested. Attention: To check the authenticity of testing, inspection report & certificate, please contact us at telephone: 86-21-5891 1660, or email: CN_Sales@sgs.com

3F Building, No. 888, Yuhuan Road, Kunshan District, Shanghai, China 200225
中国·上海·锦汇区宜山路888号3楼 邮编: 200225

1 86-21-5891 1660 www.sgs.com.cn
1 86-21-5891 1660 sgs.cn@sgs.com

Member of the SGS Group (SGS SA)

SGS Tested:

Antimicrobial Rate > 99.99%

The durability antimicrobial rate remains > 99.99%

The principle of non-leachability ensures that the antimicrobial properties persist throughout the material's entire lifecycle.

A building material that prevents the adhesion of bacteria and viruses.



INDOOR APPLICATION

KingTecPan

Cili Board

DP Ceiling

Tina Sound Acoustic Board

Slab-king Floor Board



Technical Index

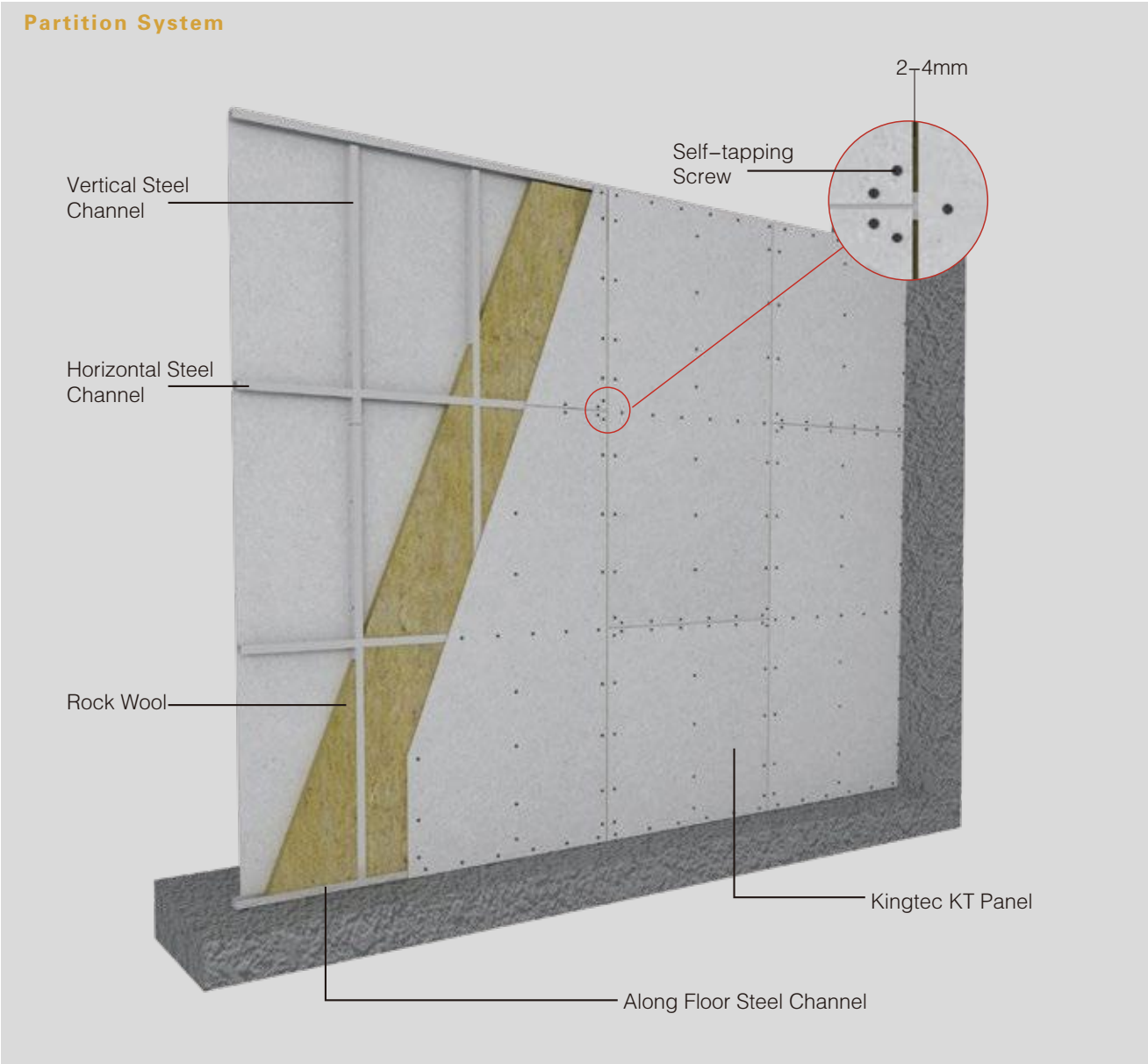
Items	KT-L	KT	KT-W
Standard Size mm	2440 X 1220 X (8、 9)		
Density g/cm³	≤1.10	1.1 < D≤1.4	> 1.40
Thermal Conductivity W/(m.k)	≤0.20	≤0.25	≤0.30
Moisture Content Rate %	≤10	≤10	≤10
Wet Expansion Rate %	≤0.25	≤0.25	≤0.25
Bending Strength Mpa (Dry)	≥6	≥8	≥10
Bending Strength Mpa (Dry)	25 freeze-thaw cycles, no cracking, no delamination, no falling off.		
Water Impermeability	24hrs test, no water-drop		
Asbestos Content	Comply with HJ/T223-2005 Standard, asbestos free		
Non-combustibility	Comply with GB8624-2006 Grade A1		
Radioactivity	Comply with GB6566-2010 Standard.		
	Internal Exposure Index IRa≤0.20		
	External Exposure Index Ir≤0.25		
	Grade A decoration materials, unlimited production, marketing and application range.		

The above data is just for a reference, for more info, you could contact our technical department.
If you want to book other size boards, you are welcome contact our marketing center. +86-18101707889 (WeChat)

KingTecPan

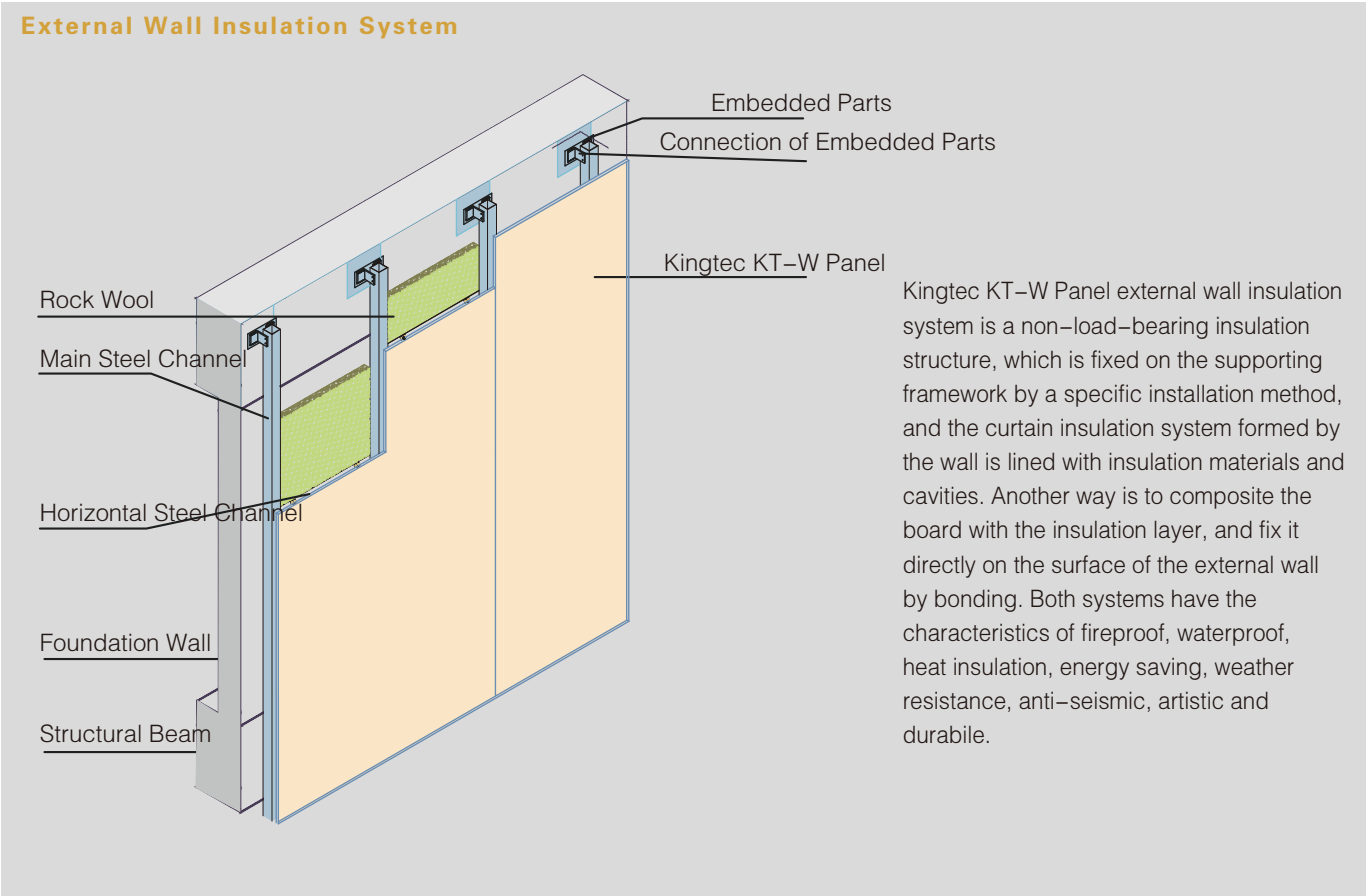
KingTecPan is non-asbestos energy-saving light weight building board with tobermorite crystal structure, which is famous for its high stability. It is formed under the international leading ktn300 technology by high-temperature autoclave curing treatment. It has different density range: low density (KingTec TK-L Panel), medium density (KingTec KT Panel), high density (KingTec KT-W Panel) for your choice.



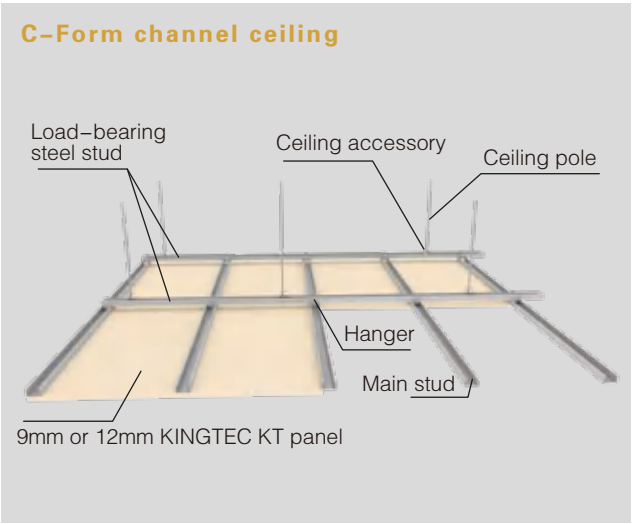


The Excellent Function of the Light Weight Partition Built by Kingtec KT Panel

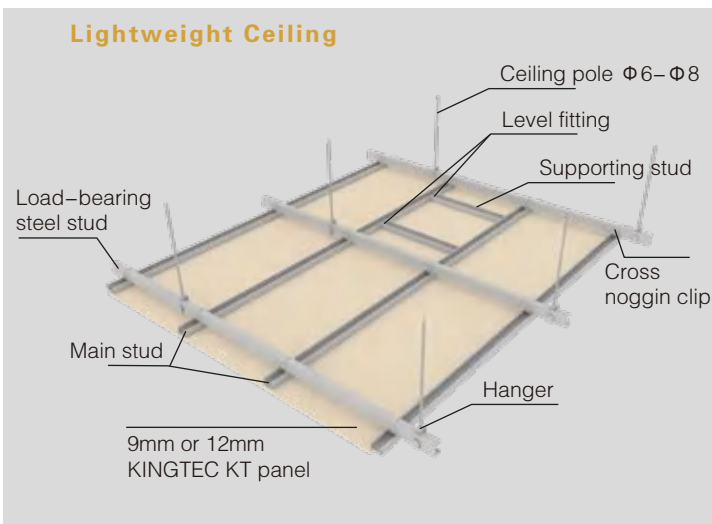
- 1. Light weight, it could greatly reduce the load of the building structure, could reduce the self-weight of the building and reduce the project cost.
- 2. Sound insulation performance is good, the highest sound insulation effect can reach more than 60 dB, which can be widely used in hotels, cinemas, Grade A office buildings and other areas with high sound insulation requirements.
- 3. Excellent waterproof performance. The product has formed stable tobermorite crystal structure through high temperature autoclave curing, and the product is waterproof. After 25 cycles of freeze-thaw, there is no cracking and delamination, and in wet weather, there is no condensation on the wall.
- 4. With excellent fire performance, the board is of A1 class noncombustible material, and the smoke toxicity is of AQ safety class, which is an excellent firewall material.
- 5. Fast construction progress, dry operation, large area laying, easy to install.
- 6. The wall surface is flat, which can be directly decorated with wall coating, pasted with veneer, PVC decorative board, ceramic tile and other decorative materials.



Kingtec KT-W Panel external wall insulation system is a non-load-bearing insulation structure, which is fixed on the supporting framework by a specific installation method, and the curtain insulation system formed by the wall is lined with insulation materials and cavities. Another way is to composite the board with the insulation layer, and fix it directly on the surface of the external wall by bonding. Both systems have the characteristics of fireproof, waterproof, heat insulation, energy saving, weather resistance, anti-seismic, artistic and durable.



This ceiling system can be designed to various 3-D modeling with gradual pattern effects. It is popular for large sized ceiling over 50m² and spans in excess of 4m and for deeper ceiling void over 450mm. C-shaped Channel ceiling should be considered when the imposed load is 80-100kg.



This ceiling system is designed for simplicity and minimum ceiling void. It is suitable for small ceiling less than 50m² and spans less than 4m.



Technical Index

Standard Size mm	1220 X 2440 X 8
Density g/cm³	≥ 1.20
Thermal Conductivity W/(m.k)	≤ 0.25
Moisture Content Rate %	≤ 35
Wet Expansion Rate %	≤ 0.20
Non-combustibility	Comply with GB8624-2006 Grade A1
Water Impermeability	24hrs test, no water-drop
Frost Resistance	25 freeze-thaw cycles, no cracking, no delamination, no falling off.
Bending Strength Mpa (Dry)	≥ 10
Bending Strength Mpa (Saturated)	≥ 7
Radioactivity	Comply with GB6566-2010 Standard.
	Internal Exposure Index IRa ≤ 1.0 External Exposure Index Ir ≤ 1.0
	Grade A decoration materials, unlimited production, marketing and application range.
Mildew and bacteria resistance	Comply with HG/T3950-2007 standard, grade 0
Asbestos Content	Comply with HJ/T223-2005 Standard, asbestos free

The above data is just for a reference, for more info, you could contact our technical department.
If you want to book other size boards, you are welcome contact our marketing center. +86-18101707889 (WeChat)

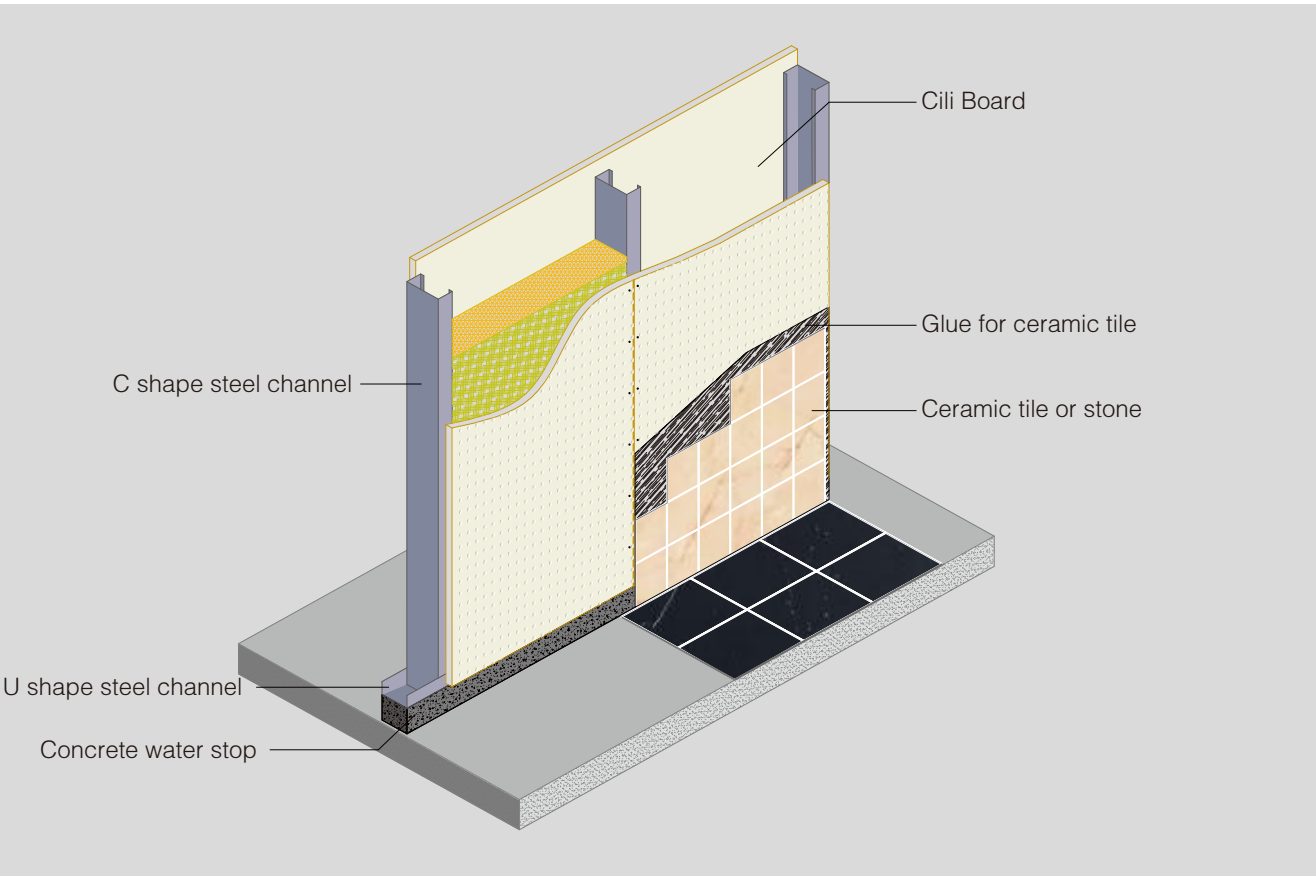
Cili Board

Kingec Cili Board was produced base on Kingtec fiber cement boards formulate by autoclave process which has unique embossing on the surface with high bending strength. It is durable, damp proof, non-asbestos, non-toxic and no environment pollution and harmless. The raw materials are Portland cement, natural wood fiber, selected minerals and additives, and so on. Wood fibers, cement,minerals and additives will interact each other and form to be hard tobermorite crystal to form high bending strength and unique characteristics of the boards.

Nowadays,Cili Board is very frequently been applied for the under ground space, toilet, washing room and kitchen of office buildings, star hotels, quick hotels and so on.



Cili Board Partition Structure



Before building Cili Board Partition, need to build bottom floor waterproof layer in advance:Build a 100mm height water stop area. And then fix U Shape along floor and ceiling steel channel installation, we should arrange the wires and water pipes.After that, then use screws to fix Cili Board onto the space, and finally install the Cili Board at another side. Board joint seams, need to be filled by waterproof sealant. After all that, then stick stones or ceramic tiles.





DP Decorative Ceiling Board

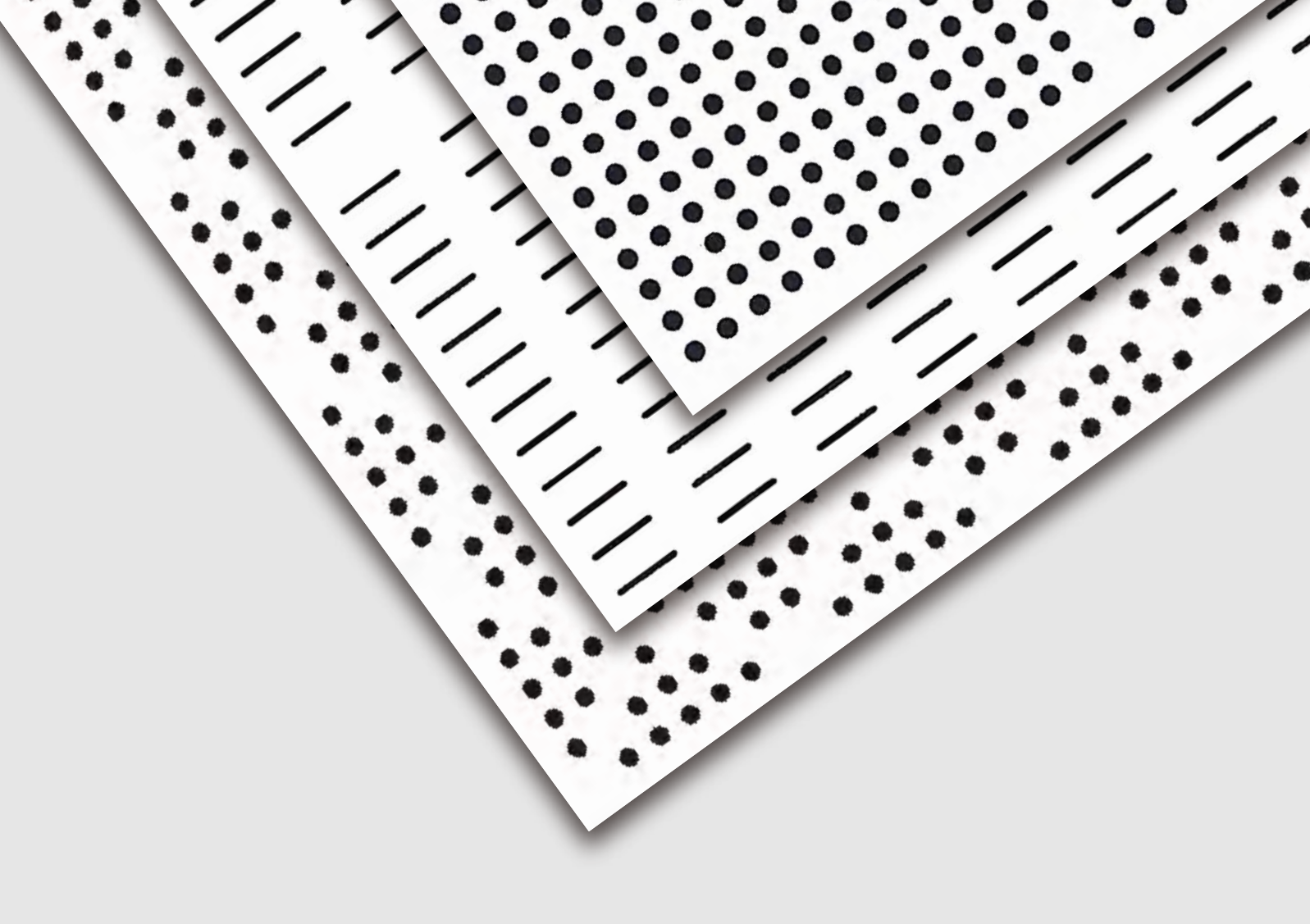
DP ceiling system is designed with one tenet in mind: everything comes from your needs. Therefore, in order to keep your living environment healthy and clean, DP ceiling special keel can better reflect the visual extension and overall artistic effect.

Technical Index

Standard Size mm	595 X 595 X 6 603 X 603 X 6
Surface Coating	Water based enamel paint, Waterproof UV Paint, Acrylic Latex Paint
Material	Non-asbestos Fiber Cement Board
Non-combustibility	Grade A1
Density g/cm³	1.1 < D ≤ 1.4
Radioactivity	Comply with GB6566-2010 Standard.
	Internal Exposure Index IRa ≤ 1.0; External Exposure Index Ir ≤ 1.0
	Grade A decoration materials, unlimited production, marketing and application range.
Mildew and bacteria resistance	Comply with HG/T3950-2007 standard, grade 0
ACID and Alkali Resistance	Comply with GB/T17748-2008 Standard
Anti-pollution	Comply with GB/T3810.14-2006 Standard

The above data is just for a reference, for more info, you could contact our technical department.
If you want to book other size boards, you are welcome contact our marketing center. +86-18101707889 (WeChat)





Tina Sound Acoustic Panel

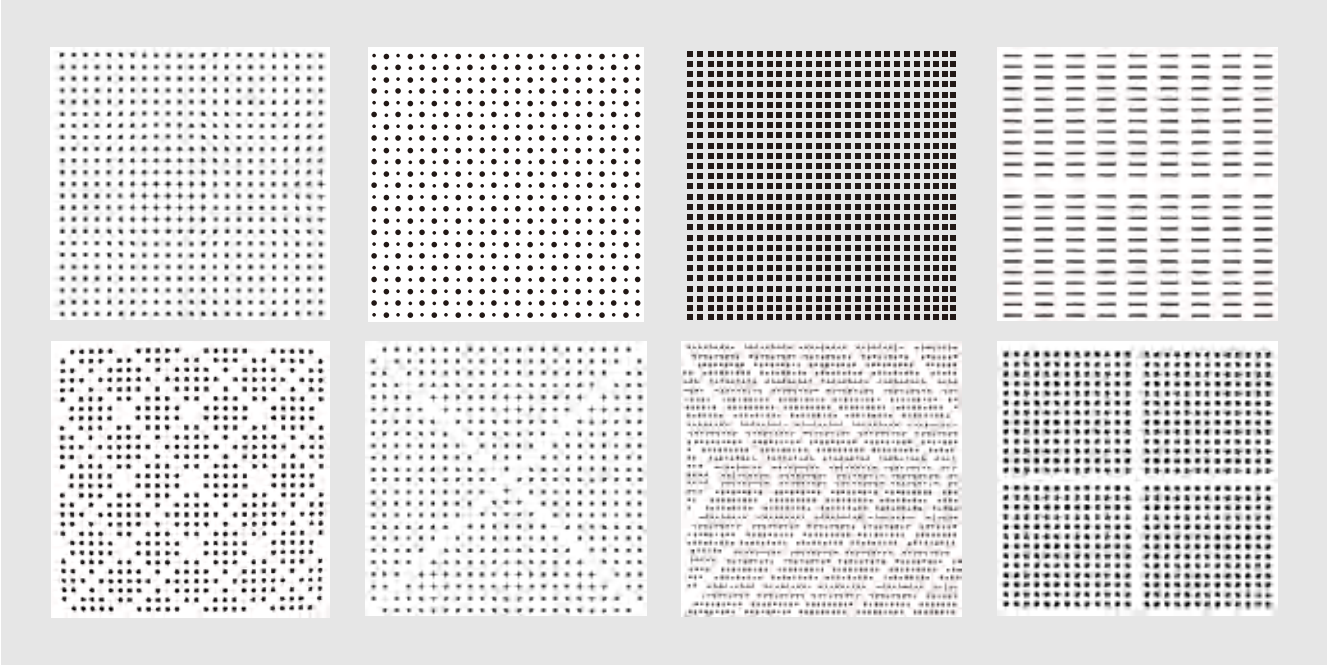
Tina sound-absorbing board is composed of high-quality Kingtec KT Panel and Professional sound-absorbingnon-woven fabric. It adopts high-end precision perforating technology, arranges different pore sizes and patterns,and makes full use of resonance sound-absorbing material to effectively solve the problem of noise reduction andsound absorption. It is fit to apply to the buildings’ CEILING and WALL systems, make architecture and Acousticsget perfect combination.

Technical Index

Standard Size mm	595 X 595 X 6 603 X 603 X 6
Density g/cm³	1.1 < D ≤1.4
Thermal Conductivity W/(m.k)	≤0.25
Moisture Content Rate %	≤10
Wet Expansion Rate %	≤0.25
Non-combustibility	Grade A1
Bending Force /N	≥180
Asbestos Content	Comply with HJ/T223-2005 Standard, asbestos free
Radioactivity	Comply with GB6566-2010 Standard.
	Internal Exposure Index IRa≤1.0; External Exposure Index Ir≤1.0
	Grade A decoration materials, unlimited production, marketing and application range.

The above data is just for a reference, for more info, you could contact our technical department.
If you want to book other size boards, you are welcome contact our marketing center. +86-18101707889 (WeChat)

Common Hole Type





Slab-King Floor Cement Board

Kingtec Slab-King Floor Cement Board is non-asbestos energy-saving light weight building board with tobermorite crystal structure, which is famous for its high stability. It is formed under the international leading ktn300 technology by high-temperature autoclave curing treatment.

Technical Index

Standard Size mm	1220 X 2440 X 24
Density g/cm³	≥ 1.30
Moisture Content Rate %	≤ 40
Wet Expansion Rate %	≤ 0.25
Non-combustibility	Grade A1
Water Impermeability	24hrs test, no water-drop
Bending Strength Mpa (Dry)	14
Bending Strength Mpa (Saturated)	11
Impact Resistance	Drop ball test once, no through crack on the board surface

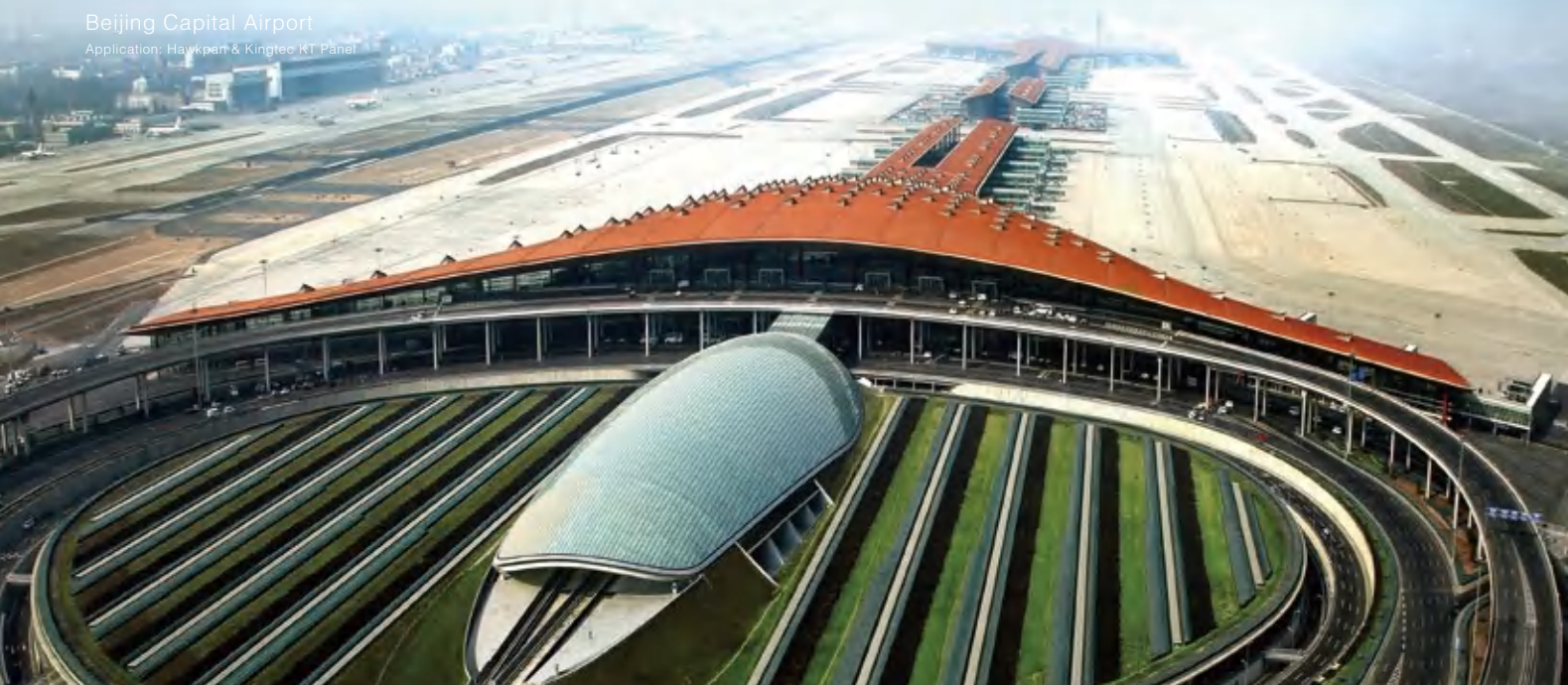
The above data is just for a reference, for more info, you could contact our technical department.
If you want to book other size boards, you are welcome contact our marketing center. +86-18101707889 (WeChat)



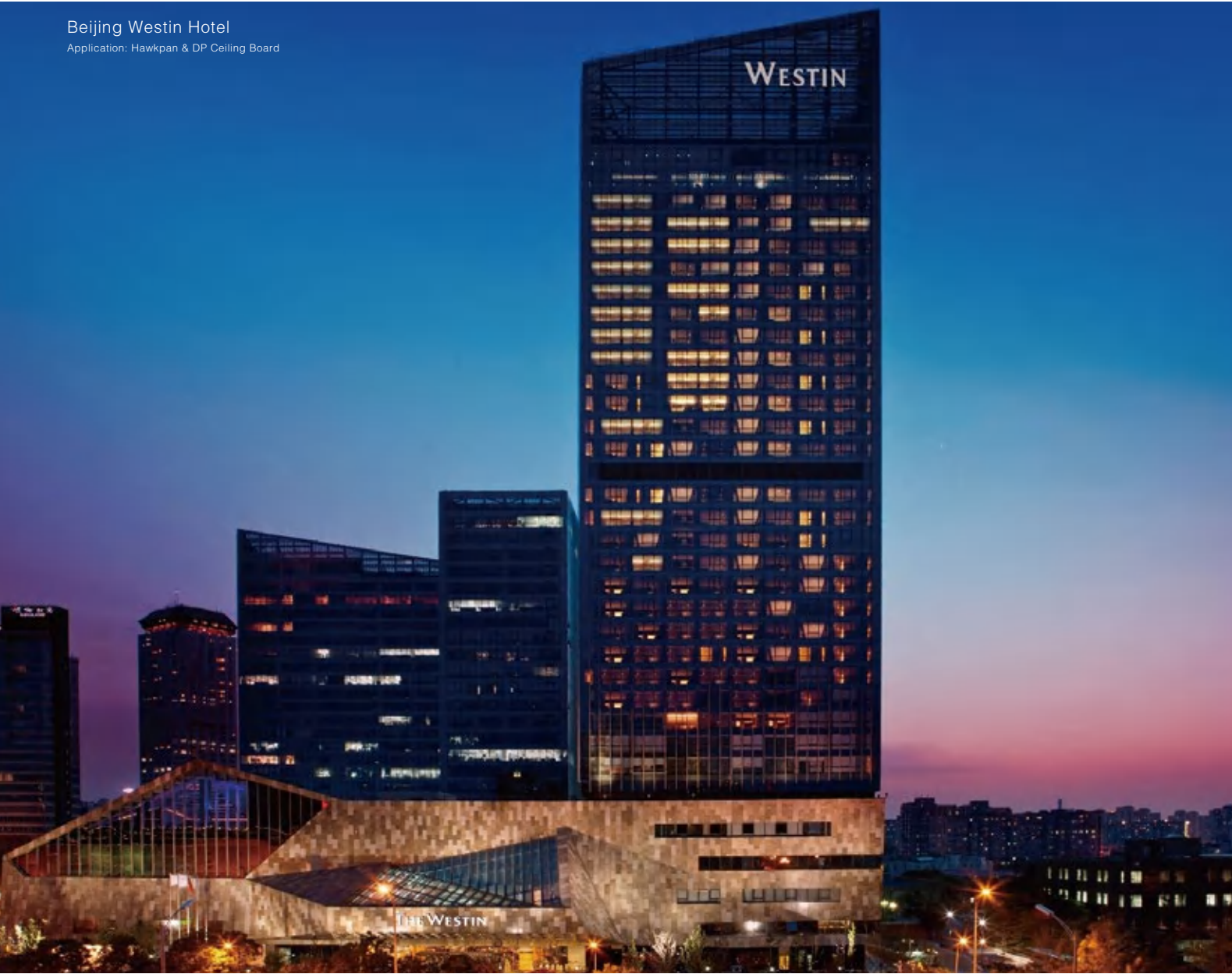
World Expo China Pavilion
Application: Hawkpan & Kingtec KT Panel



Beijing Capital Airport
Application: Hawkpan & Kingtec KT Panel



Beijing Westin Hotel
Application: Hawkpan & DP Ceiling Board



TYPICAL PROJECTS

Beijing Daxing International Airport
Application: Hawkpan & Kingtec KT Panel



The Relocation Project of GDMZH Pearl
Red Spirit & Wines Co.,LTD
Application: Hawkpan & Hawk-X Explosion Pressure Relief Board



Nanjing Sun Hung Kai Plaza
Application: Hawkpan



The Fuzhou Strait Culture and Art Centre
Application: Hawkpan



The Factory of Fujian Jinhua Integrated Circuit Co.,Ltd.
Application: Hawkpan



Aksu E-commerce Express Logistics Sorting Center
Application: Hawkpan & Hawk-X Explosion Pressure Relief Board



Zhuhai and Macao Buildings for Border Inspection of Hong Kong Zhuhai Macao Bridge
Application: Hawkpan & Kingtec KT Panel



Guangzhou Baiyun Airport
Application: Hawkpan



Guodian Yuci Thermal Power Co.,Ltd.
Application: Hawkpan & Hawk-X Explosion Pressure Relief Board



Chengdu Subway
Application: Hawkpan & Gadis Fiber Cement Cladding Board



Head Office of China Minsheng Bank
Application: Gadis Fiber Cement Cladding & DP Ceiling Board



Wuhan Financial City
Application: Gadis Fiber Cement Cladding



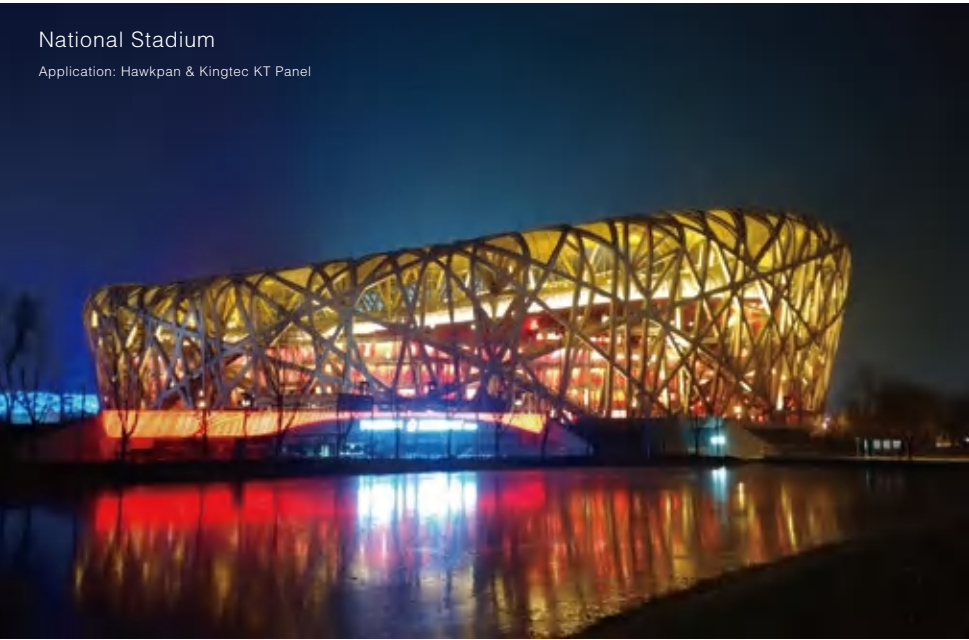
National Gymnastic Stadium
Application: Hawkpan & Kingtec KT Panel



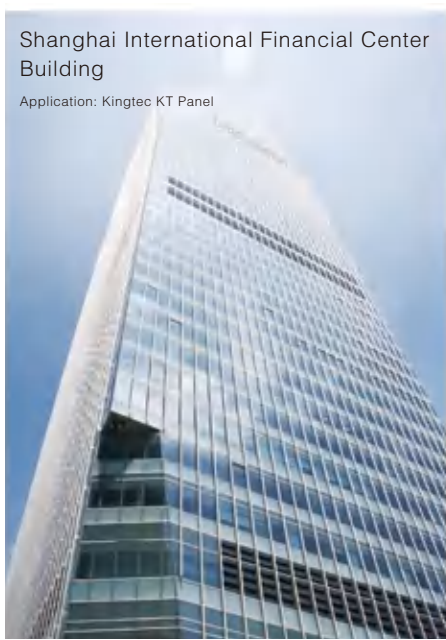
National Grand Theater
Application: Hawkpan & Kingtec KT Panel



National Stadium
Application: Hawkpan & Kingtec KT Panel



Shanghai International Financial Center Building
Application: Kingtec KT Panel



National Swimming Center
Application: Hawkpan & Kingtec KT Panel



Shanghai World EXPO Center
Application: Hawkpan



Hangzhou Internation EXPO Center
Application: Kingtec KT Panel



Shanghai Disneyland Park
Application: Hawkpan & Kingtec KT Panel



Hangzhou Internation EXPO Center
Application: Kingtec KT Panel



Shanghai Tower
Application: Kingtec KT Panel



Guangzhou TAIKOO HUI
Application: Kingtec KT Panel



Shanghai Beizhai Road Tunnel
Application: Hawk-S Tunnel Fire Board



Hebei Baisha Tobacco Co., Ltd.
Application: Hawkpan & Hawk-B Blast Fire Protection Board



Longyan Tobacco Co.,Ltd.
Application: Hawkpan & Hawk-B Blast Fire Protection Board



Guodian Hequ Power Plant
Application: Hawk-X Explosion Pressure Relief Board



Nanjing Yangtze River Tunnel
Application: Hawk-S Tunnel Fire Board



Shanghai Zhoujiazui Road Tunnel
Application: Hawk-S Tunnel Fire Board



Wuhan Steel Factory
Application: Hawkpan & Hawk-X Explosion Pressure Relief Board



Bright List for A Part of Typical Projects

Infrastructure Projects		
Beijing Subway	Shanghai Subway	Shenyang Subway
Chongqing Subway	Xi’ an Subway	Guangzhou Subway
Beijing Capital Airport Special Plane Building	Shanghai Pudong International Airport Boeing Hangar	Shanghai Hongqiao International Airport
Guangzhou Baiyun Airport	Hainan Sanya Airport	Urumqi International Airport
Lanzhou Airport	Beijing South Railway Station	Shanghai South Railway Station
Nanning Train Station	Nanjing Yangtze River Tunnel	Nanchang Qingshan Lake Tunnel
Public Construction Projects		
Beijing International Conference Center	Henan Jiaozuo 91 Hospital	National Indoor Stadium
Shanghai World EXPO Center	Shangha Expo Center Belgium EU Pavilion	Henan Art Center
China International Light Textile International Exhibition Center	Guangzhou Baiyun International Convention Center	China Pavilion of Shanghai Worl EXPO Center
Beijing Water Cube Swimming Pool	Olympic Underground Space	Beijing Workers' Gymnasium
Beijing Shooting Gallery	Olympic Water Park	Shanghai F1 Autodrome
AVIC Chengfei Stadium	Beijing Architectural Design Institute	Suzhou Dushu Lake Sports Center
Xining Gymnasium of Qinghai Province	National Great Theater	Yuanmou Film Shooting Base
Yanqing Cultural Center	Shanghai Daguangming Cinema	Aksu TV studio
Beijing Haidian Hospital	Peking Union Medical College Hospital	Beijing Anzhen Hospital
Beijing Tiantan Hospital	Bejing 301 Hospital	Beijing Hospital
Shanghai Zhongshan Hospital	Shanghai Xinhua Hospital	Kunshan Zongrenqin Hospital
Nanjing Second People’ s Hospital	Jiangsu Military General Hospital	Shenzhen Nanshan People’ s Hospital
Guangxi Social Emergency Center	Shenzhen Personnel Hospital	Chengdu Huaxi Hospital
Xinjiang Cardiovascular and Cerebrovascular Hospital	Beijing Science and Technology Exhibition Center	Capital University of Economics and Trade
Beijing Nationality University	Tsinghua University	Beijing People's Police College
Beijing Public Security University	Beijing University of Technology	Beijing No.4 Middle School
Beijing Second Middle School	Beijing Shijia Primary School	Beijing Huakai Garden Kindergarten
Tianjin University of Posts and Telecommunications	Gymnasium of Guangzhou Zhongshan University	Henan Yellow River University of Science and Technology
Sichuan University	Xinjiang University	Shanghai Songjiang University City
Tianjin University of Posts and Telecommunications	Beijing Architectural Design Institute	Shanghai Hall of the Great Hall of the People
National Museum	Shandong Museum	Guangdong Museum
Head Office of China Minsheng Bank	Bank of China Information Center	Head office of Agricultural Bank of China
Shanghai UnionPay Center	Beijing Taiwan Affairs Office Building	Guangzhou University
Office Building of National United Front Work Department	Intelligence Department of headquarters of the General Staff	Office Building of Security Bureau of the Ministry of Public Security

Civil Construction		
Beijing Rongfeng 2008 Flats	Beijing Naparwan Villa	Beijing New Yorker
Hangzhou Taohuayuan Villa	Guangzhou Nansha Binhai Garden	Wuhan Tibetan Dragon Island Villa
Kunshan Naparwan Villa	Beijing Urban Construction Building	Zhongguancun Financial Center
Beijing Xuelian Building	Beijing Fortune Center	Beijing Wantong Center
Beijing Yintai Building	Sinopec Headquarters Building	MOMA Beijing
Beijing Hairun Building	Beijing Wanliu Center	Beijing Oriental Culture Center
Beijing Beiguang Media Co., Ltd.	China Telecom Building in Beijing	Beijing Aerospace Exhibition Center
Beijing International Club	Shanghai Ganghui Plaza	Shanghai Zhendan building
Shanghai Jinzhong Building	Shanghai IFC	Raffles City Shanghai
Guangzhou TAIKOO HUI	West Tower of Guangzhou	Guangdong Planning Building
Guangdong Planning Building	Nanning Minmetals Building	Shandong Sanyuan building
Guizhou TV Station	Qinghua Building of Xi’ ning	Gansu Radio and Television Center
Tiantan Hotel	Beijing Westin Hotel	Crowne Plaza Beijing
Shanghai Meilanhui Hotel	Shanghai Fairmont Peace Hotel	Sofitel Shanghai Sheshan
Suzhou Jinji Lake Grand Hotel	Yiwu Jindu Hotel	Qingdao old man Stone Hotel
The First Building in Chengdu	Sheraton Dongguan	Haikou Sunshine Hotel
Chongqing Chashan Zhuhai Hotel	Beijing Dazhongsi Shopping Mall	Beijing Zhongguancun E–World
Factory Buildings		
Changsha Cigarette Factory	Chengdu Cigarette Factory	Guizhou Cigarette Factory
Henan Baisha Cigarette Factory	Shougang Caofeidian Steel Works	Wuhan Steel Factory
No.2 Steelmaking Plant of Baosteel	Qian’ an Steel Works	Beijing AnTai Technology Building
Suzhou Fairchild Semiconductor	Yili Dairy Factory	East China Logistics Warehouse
Beijing Publishing Creative Industry Base Warehouse	Suning Electric North China Turnover Warehouse	National General Logistics Department 3D Warehouse
Shanghai Weilong Logistics Warehouse	Shanghai Kyowa Amino Acid Co., Ltd.	Jiangsu Yicheng Barrier Technology Co., Ltd.
Wuxi Newway Biotech Co.,LTD.	Nantong Hisun Pharmaceutical Co., Ltd.	Yidele Electronics (Hangzhou) Co., Ltd.
Zhejiang Starry Pharmaceutical Co., Ltd.	Zhejiang Haishen Pharmaceutical Co., Ltd.	Zhejiang Puli Pharmaceutical Co., Ltd.
Zhejiang Hisun Pharmaceutical Co., Ltd.	Yantai New Era Health Industrial Park	Zhejiang Huahai Pharmaceutical Co., Ltd.
Zhejiang Medicine Co., Ltd.	Zhejiang Great Bridge Paint Co., Ltd.	Guangdong Yixiang Pharmaceutical Co., Ltd
Factory of Zhejiang Haisco Pharmaceutical Group	Aviation 207 Workshop	Huizhou Xingda Petrochemical Industry Co., Ltd.
Zuhai Eternal Materials Co., Ltd.	Shanghai Electric	Shanghai Aircraft Factory
Chengdu Aircraft Factory	Chongqing Newspaper Group Printing Factory	