

Line9/Line12 Table Essential User Manual

7. Precautions

1. The fixture must be installed by a qualified professional.
2. Installation must be done with the power off to prevent electric shock or equipment damage.
3. Do not disassemble or modify the fixture yourself, as this may reduce its safety protection level.
4. Install the fixture away from heat and vibration sources to avoid operational interference.
5. Ensure the power lines (neutral, live, and ground wires) are correctly connected and securely fastened.
6. Wiring Instructions: When connecting to the power supply, use a junction box with an IP rating that is not lower than the fixture's IP rating. The wires should be connected inside the terminal, with proper wire fixation in place.
7. Ensure the product's specifications match the local electrical grid parameters.
8. Avoid contact with corrosive chemicals, as they may damage the fixture.
9. Before installation, check the technical data and specifications on the nameplate to ensure they match actual use conditions. Ensure all components are intact before connecting the power.
10. Do not dismantle the fixture without proper authorization. Disconnect the power supply before performing any maintenance or inspection.
11. During maintenance, avoid damaging explosion-proof surfaces. After servicing, apply anti-rust oil, and securely close the fixture before use.

INDLEDs(Shenzhen) Co.,Ltd

Add: 402Workshop, B3 Lift, B building, Jinkaijin Industry Park, Shiyan town,
Bao'an District, Shenzhen , China

Tel: 0755-23078774

Email: eric@indleds.com

Website: www.indled.com

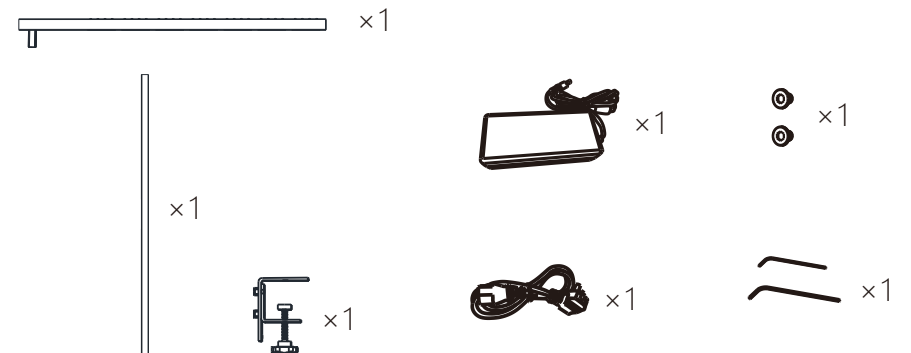
1. Product Description

The Line9 is suitable for dual workstations with a desktop length of 0.9-1.2 meters.
The Line12 is suitable for dual workstations with a desktop length of 1.2-1.6 meters.

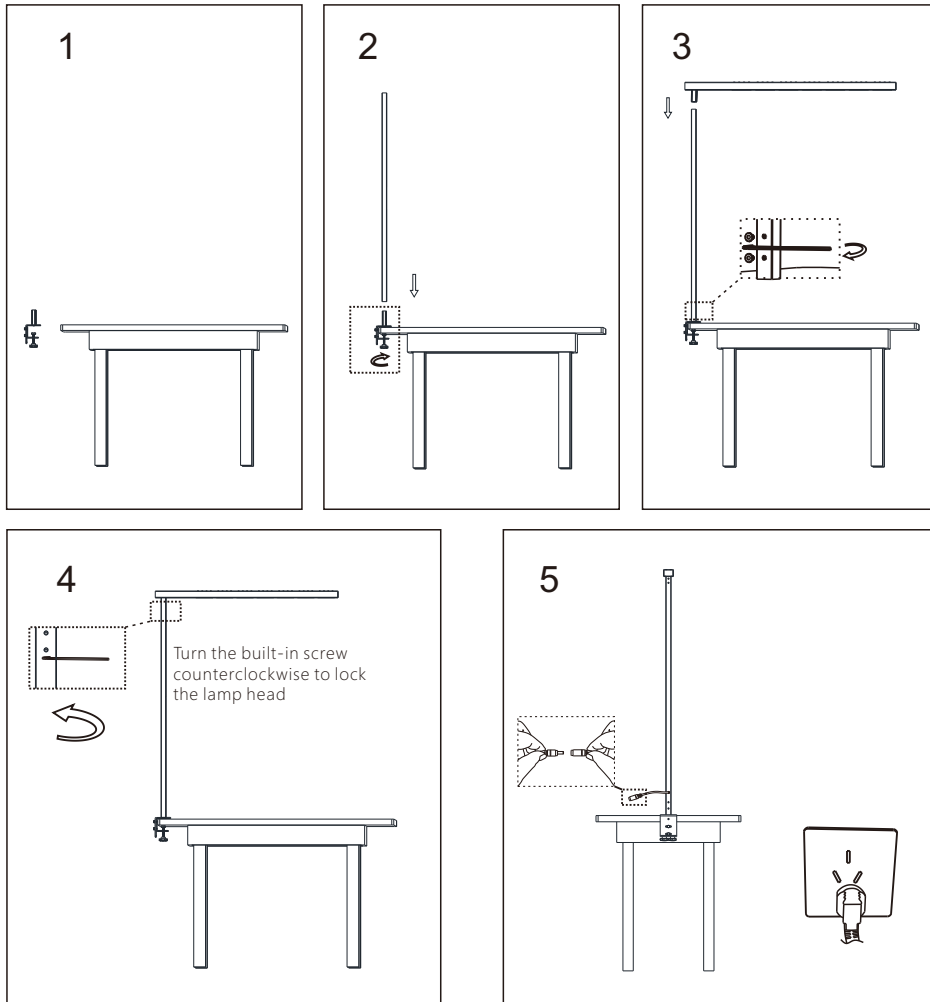
2. Specification

Name	Line9/12 Table Essential
Model No	ZL09TE/ZL12TE
Input Voltage	100-240V ~ 50Hz
Consumption	60W/85W
Luminous	8150Lm/11606Lm
Efficacy	≥130Lm/W
Color temperature	4000K
CRI	≥93
Operation temperature	-30°C ~ 40°C
Protection	IP54
Size	906×80×1150
Weight	4.5kg/5kg

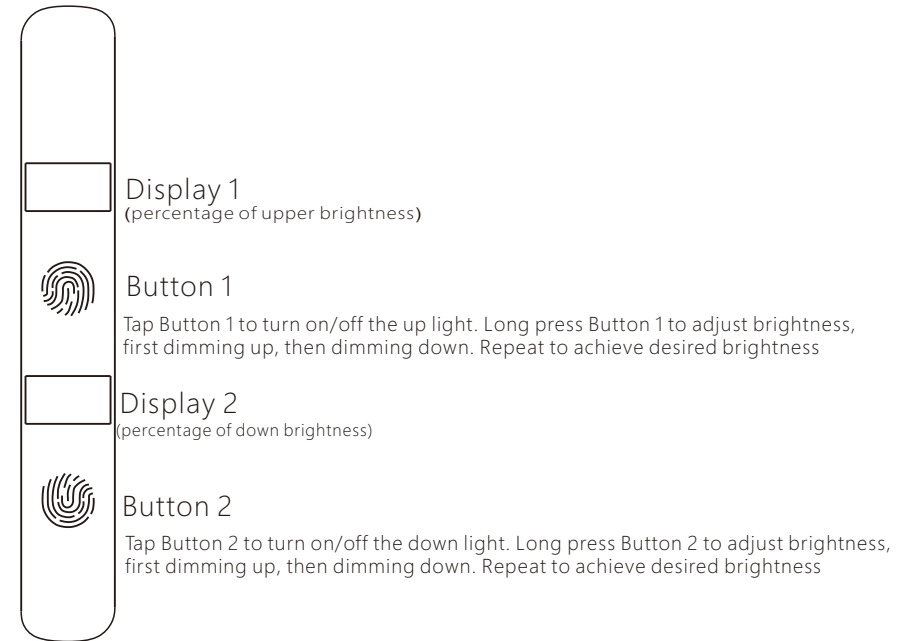
3. Product component



4. Installation



5. Instruction



Manual mode: Tap button to turn on/off the lamp

Human sense mode: When the light is sensed, the human body will be on, and the light will be automatically extinguished after the person walks for 5 minutes. The human return sensor will automatically light up when it detects the human.

Mode switch: Turn on the lamp, press and hold button 1 and button 2 at the same time, after 3 seconds, the lamp will flash twice to start the human sense mode. Same operation, the lamp will flash once to start the manual mode.

Warning: The lamp will not automatically turn on or off after being manually turned off in the human sense mode.

6. Warranty

The lamp is covered by a 3-year warranty from date of purchase.